



Number: 65-703-0383



WALRUS PUMP

TPH Series

Multi-stage
Centrifugal Pump



Applications

The WALRUS TPH Series is horizontal multistage centrifugal pump, suitable for clean water/liquid without abrasive matters. The applications are versatile, such as pressure boosting, transfer, circulation, and machinery.

- Industrial circulation system
- Washing/cleaning system
- Pressure booster system
- Water/liquid transfer
- Agricultural irrigation

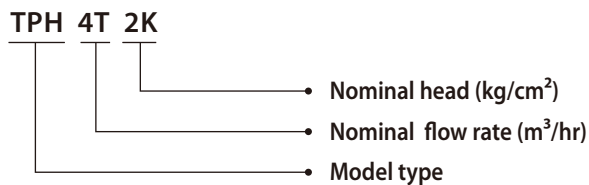
Operation conditions

Ambient temperature :Max. +40°C
Liquid temperature range:+0°C ~ +90°C
Operating pressure:Max. 10 kg/cm²
Inlet pressure:Max. 6 kg/cm²

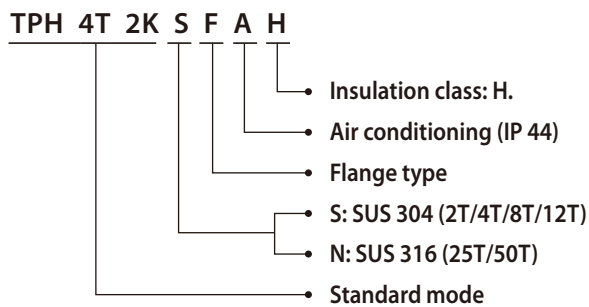
Pump construction

Horizontal multistage centrifugal pump, non self-priming, co-axial pump/motor design, impellers mounted on extended motor shaft. Main working parts made by stainless steel.

Standard mode



Code



Motor

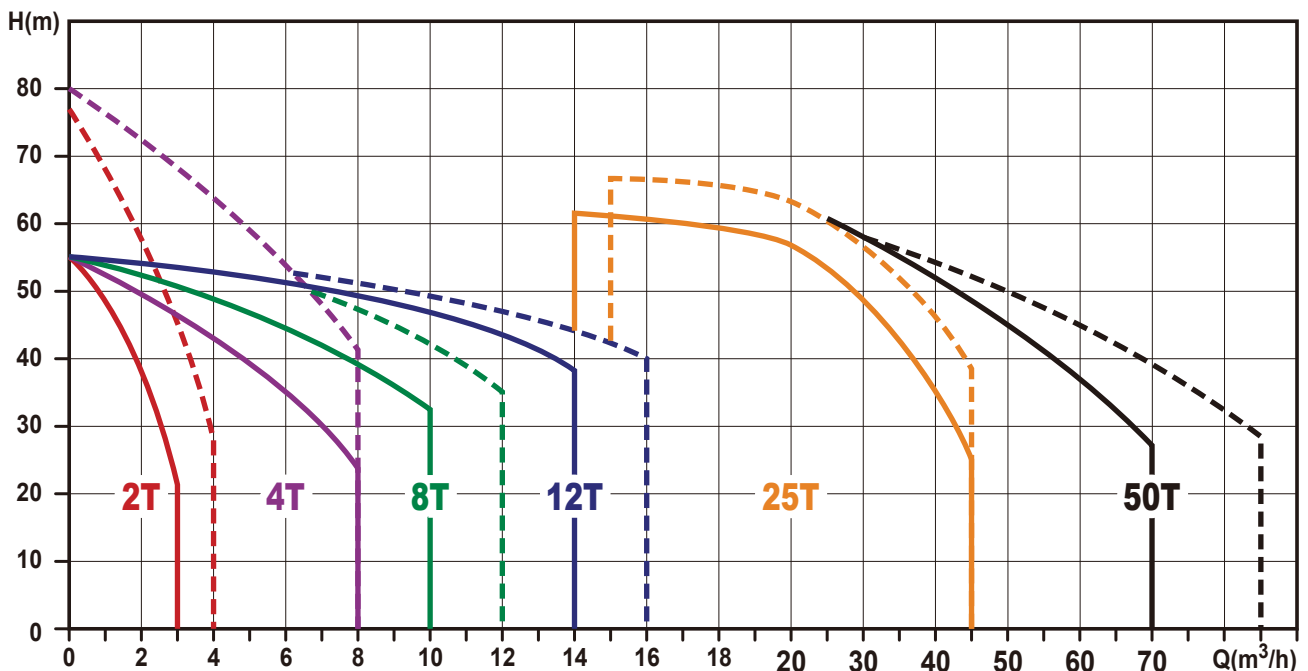
Enclosure protection class: IP54
Insulation class: F.
Frequency range: 50 / 60 Hz
Nominal speed : 2900 / 3500 rpm
Voltages code:

| Code | PH | 50Hz | 60Hz |
|------|----|------------------|------------------|
| 1B | 1 | - | 220V |
| 1R | 1 | 200-240V | - |
| 3Q | 3 | 200-240/380-440V | - |
| 3Z* | 3 | 200-255/380-440V | 200-255/380-480V |
| 4U* | 3 | 200-240/380-415V | 200-240/380-440V |
| 6Q | 3 | - | 200-240/380-440V |
| 6Z | 3 | - | 200-255/380-480V |

Optional : 50hz, 60hz models are available on request.

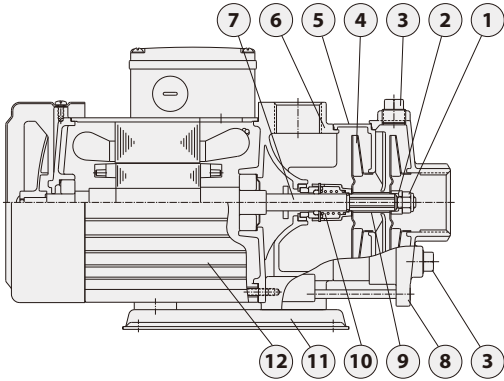
* The motor can be use in both 50/60 hz.

Performance range 50Hz ——— 60Hz - - - -

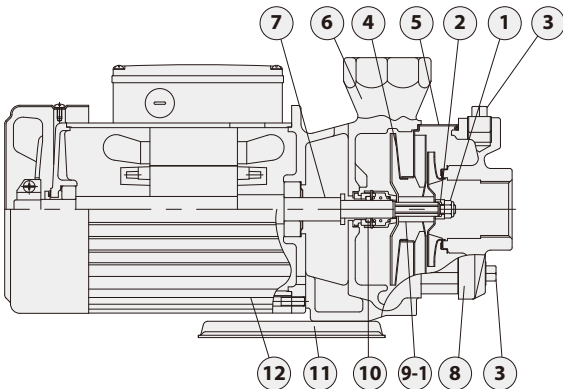


Sectional drawing

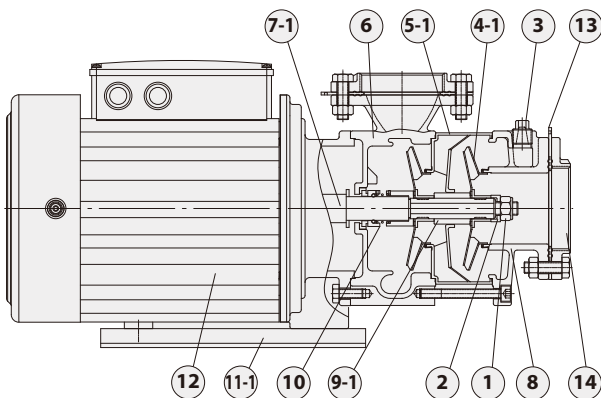
(TPH2/4T)



(TPH 8/12T)



(TPH 25/50T)



Material construction

| No. | Part name | Material | | |
|-----|----------------------|----------------|----------|----------|
| | | Standard | S series | N series |
| 1 | Lock Nut | SUS 316 | SUS 316 | SUS 316 |
| 2 | Sleeve(Shaft End) | SUS 316 | SUS 316 | SUS 316 |
| 3 | Water Plug | FC 20 | SUS 304 | SUS 316 |
| 4 | Impeller | SUS 304 | SUS 304 | - |
| 4-1 | Impeller | SUS 316 | - | SUS316 |
| 5 | Intermediate Chamber | SUS 304 | SUS 304 | - |
| 5-1 | Intermediate Chamber | SUS 316 | - | SUS 316 |
| 6 | Pump Casing | FC 20 | SUS 304 | SUS 316 |
| 7 | Shaft | SUS 304 | SUS 304 | - |
| 7-1 | Shaft | SUS 316 | - | SUS 316 |
| 8 | Suction Chamber | FC 20 | SUS 304 | SUS316 |
| 9 | Sleeve | SUS 304 | SUS 304 | - |
| 9-1 | Sleeve | SUS 316 | SUS 316 | SUS 316 |
| 10 | Mechanical Seal | HGSH | | |
| 11 | Mounted Base | Coating Steel | | |
| 12 | Motor Shell | Aluminum alloy | | |
| 13 | Gasket | Teflon+NBR | | |
| 14 | Flange | FC 20 | - | SUS 316 |

SUS 304 may be replaced by SUS316 depended on stock availability.

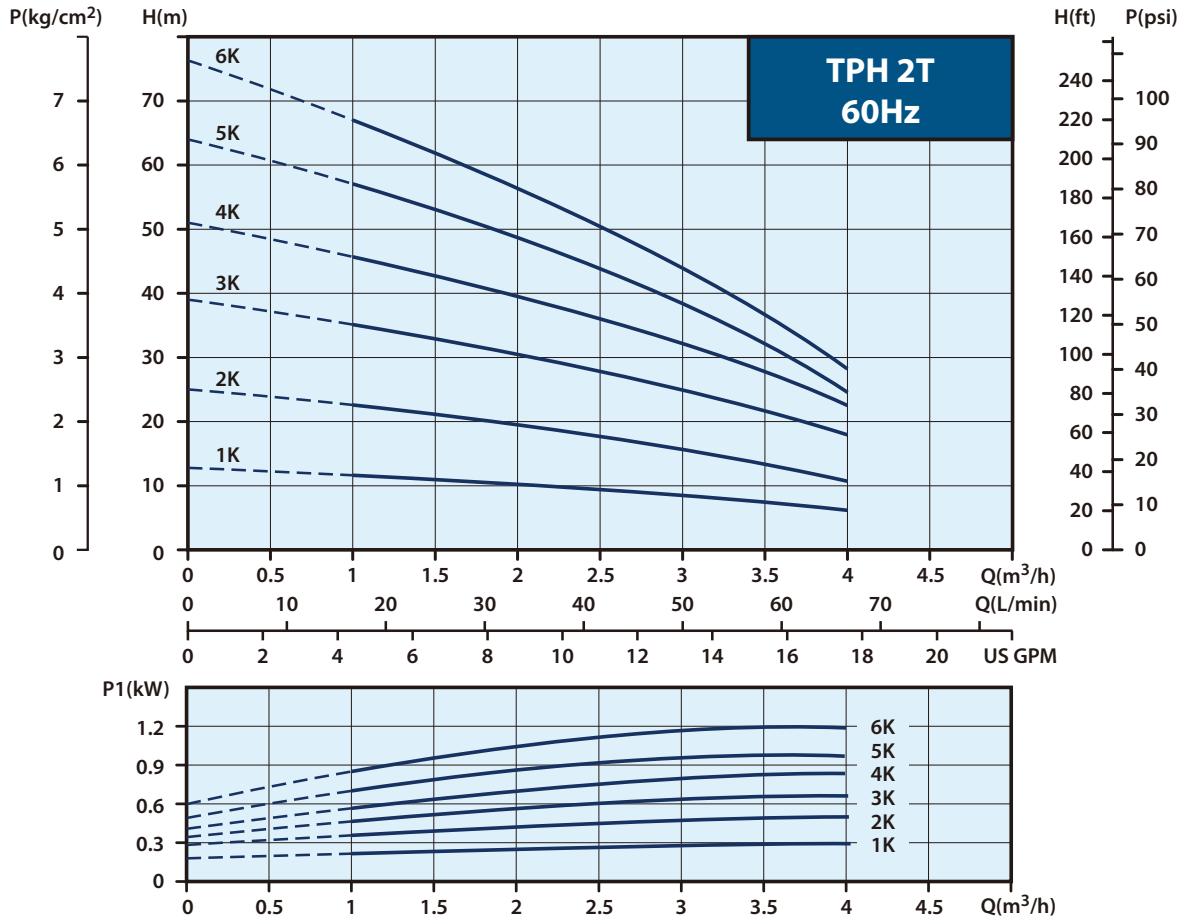
Options on request

- Terminal box position adjustable
- Special mechanical seal

| Mechanical seal type | Material | |
|----------------------|---|-----------------------------------|
| | Stationary Face/ Rotary Face | Cup Gasket & O Ring |
| HGSH HGSV HGSE | (G)Carbon/ (S)Silicium carbide | (H) HNBR (V) Viton (E) EPDM |
| HTTH HTTV HTTE | (T)Tungsten Carbide/ (T)Tungsten Carbide | |
| HSSH HSSV HSSE | (S)Silicium carbide/ (S)Silicium carbide | |



Performance curves



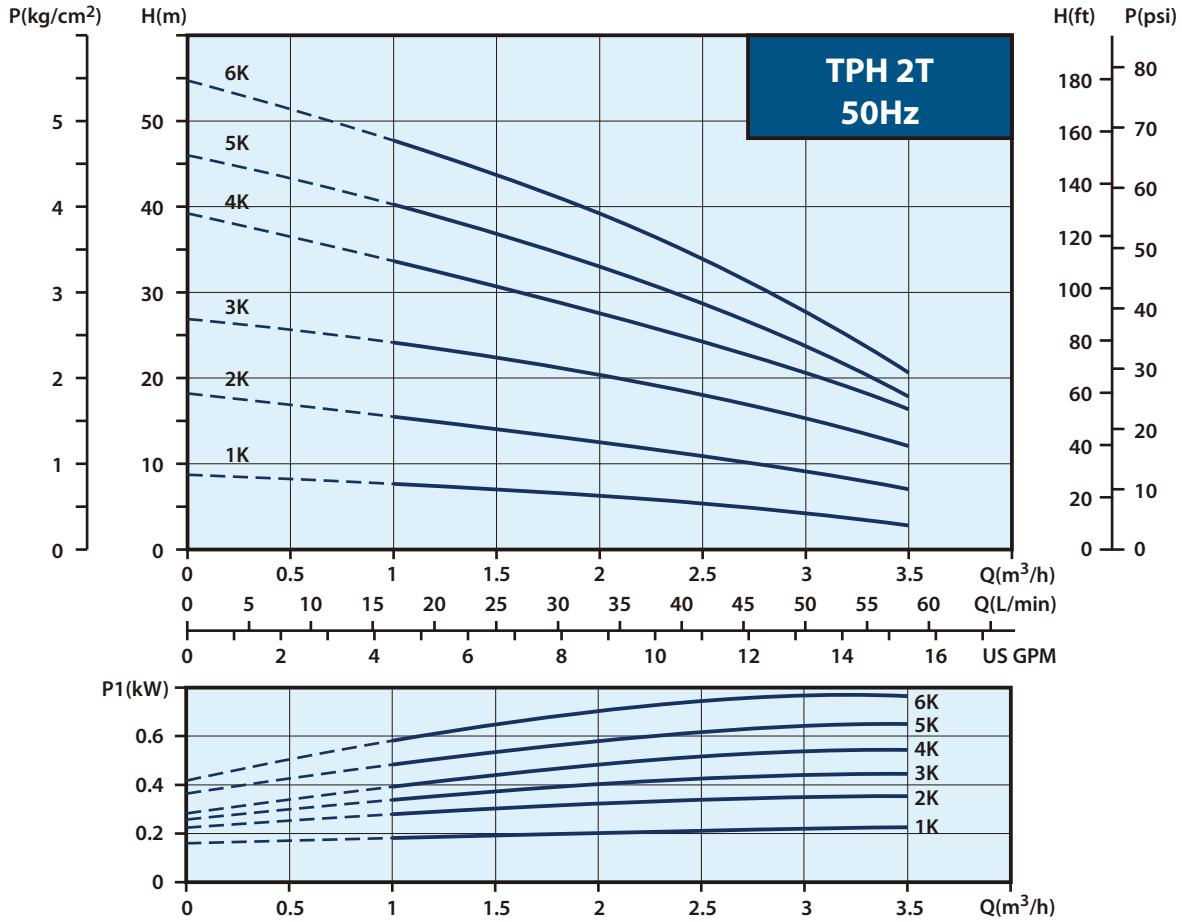
Electrical data, 50/60Hz

| Model | PH (Ø) | voltage code | Cycle (Hz) | Volts (V) | Input Power (W) | Input Ampere (A) |
|-----------|--------|--------------|------------|-------------------|-----------------|-------------------|
| TPH 2T 1K | 3 | 3Z | 50 | 200-255 / 380-440 | 340 | 1.6-2.8 / 1.0-1.5 |
| | | | 60 | 200-255 / 380-480 | 370 | 1.5-1.9 / 1.0-1.3 |
| TPH 2T 2K | 3 | 3Z | 50 | 200-255 / 380-440 | 450 | 1.9-2.8 / 1.2-1.5 |
| | | | 60 | 200-255 / 380-480 | 560 | 2.1-2.2 / 1.5-1.5 |
| TPH 2T 3K | 3 | 3Z | 50 | 200-255 / 380-440 | 530 | 2.0-2.8 / 1.3-1.6 |
| | | | 60 | 200-255 / 380-480 | 750 | 2.6-2.5 / 1.6-1.6 |
| TPH 2T 4K | 3 | 3Z | 50 | 200-255 / 380-440 | 620 | 2.2-2.9 / 1.4-1.7 |
| | | | 60 | 200-255 / 380-480 | 910 | 3.0-2.9 / 1.7-1.7 |
| TPH 2T 5K | 3 | 3Z | 50 | 200-255 / 380-440 | 700 | 2.4-3.0 / 1.4-1.6 |
| | | | 60 | 200-255 / 380-480 | 1060 | 3.3-3.0 / 1.8-1.8 |
| TPH 2T 6K | 3 | 3Z | 50 | 200-255 / 380-440 | 850 | 3.1-3.6 / 1.8-2.1 |
| | | | 60 | 200-255 / 380-480 | 1290 | 4.0-3.6 / 2.4-2.4 |

Electrical data, 60Hz

| Model | PH (Ø) | voltage code | Cycle (Hz) | Volts (V) | Input Power (W) | Input Ampere (A) |
|-----------|--------|--------------|------------|-----------|-----------------|------------------|
| TPH 2T 1K | 1 | 1B | 60 | 220 | 450 | 2.1 |
| TPH 2T 2K | 1 | 1B | 60 | 220 | 760 | 4.3 |
| TPH 2T 3K | 1 | 1B | 60 | 220 | 900 | 4.8 |
| TPH 2T 4K | 1 | 1B | 60 | 220 | 1030 | 5.3 |
| TPH 2T 5K | 1 | 1B | 60 | 220 | 1300 | 6.3 |
| TPH 2T 6K | 1 | 1B | 60 | 220 | 1500 | 7.0 |

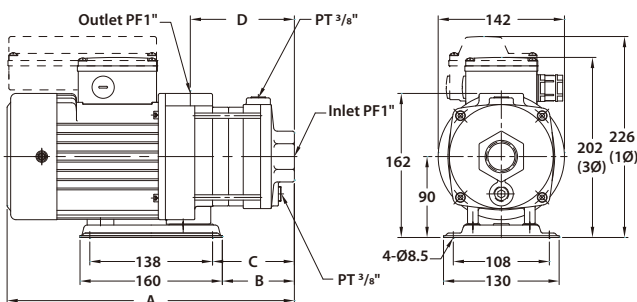
Performance curves



Electrical data, 50Hz

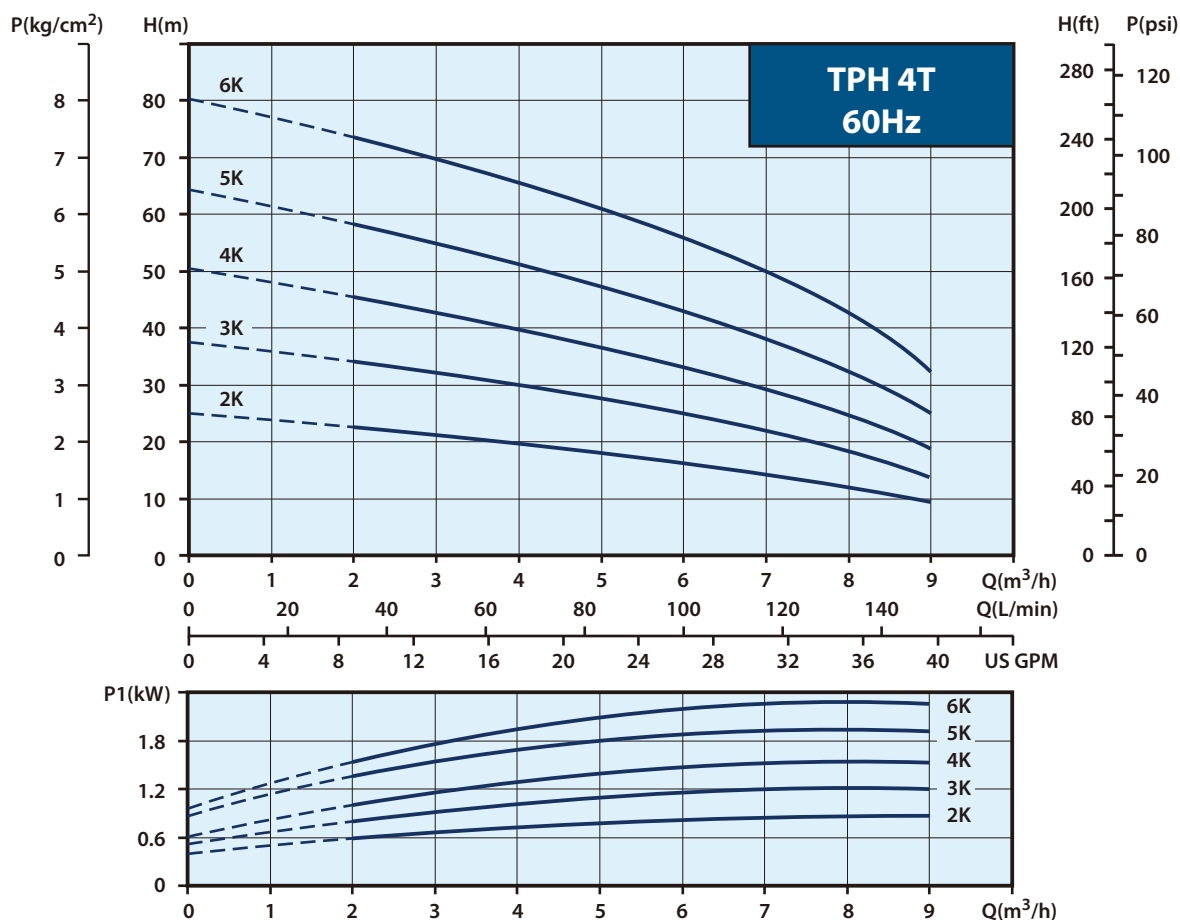
| Model | PH (Ø) | voltage code | Cycle (Hz) | Volts (V) | Input Power (W) | Input Ampere (A) |
|-----------|--------|--------------|------------|-------------------|-----------------|------------------|
| TPH 2T 2K | 1 | 1R | 50 | 200-240 | 450 | 2.4 |
| | 3 | 3Q | 50 | 200-240 / 380-440 | 420 | 2.0 / 1.3 |
| TPH 2T 3K | 1 | 1R | 50 | 200-240 | 500 | 2.5 |
| | 3 | 3Q | 50 | 200-240 / 380-440 | 520 | 2.2 / 1.4 |
| TPH 2T 4K | 1 | 1R | 50 | 200-240 | 600 | 2.9 |
| | 3 | 3Q | 50 | 200-240 / 380-440 | 590 | 2.3 / 1.4 |
| TPH 2T 5K | 1 | 1R | 50 | 200-240 | 760 | 4.0 |
| | 3 | 3Q | 50 | 200-240 / 380-440 | 680 | 3.0 / 1.9 |
| TPH 2T 6K | 1 | 1R | 50 | 200-240 | 880 | 4.3 |
| | 3 | 3Q | 50 | 200-240 / 380-440 | 860 | 3.1 / 2.0 |

Dimensions (mm)



| Model | A(mm) | B(mm) | C(mm) | D(mm) | N.W.(kg) | |
|-----------|-------|-------|-------|-------|----------|--------|
| TPH 2T 1K | 305 | 63 | 74 | 99 | 11.7 | 36 pcs |
| TPH 2T 2K | 305 | 63 | 74 | 99 | 11.8 | |
| TPH 2T 3K | 323 | 81 | 92 | 117 | 11.9 | |
| TPH 2T 4K | 341 | 99 | 110 | 135 | 12.0 | 30 pcs |
| TPH 2T 5K | 399 | 117 | 128 | 153 | 13.5 | |
| TPH 2T 6K | 417 | 135 | 146 | 171 | 13.6 | |

Performance curves



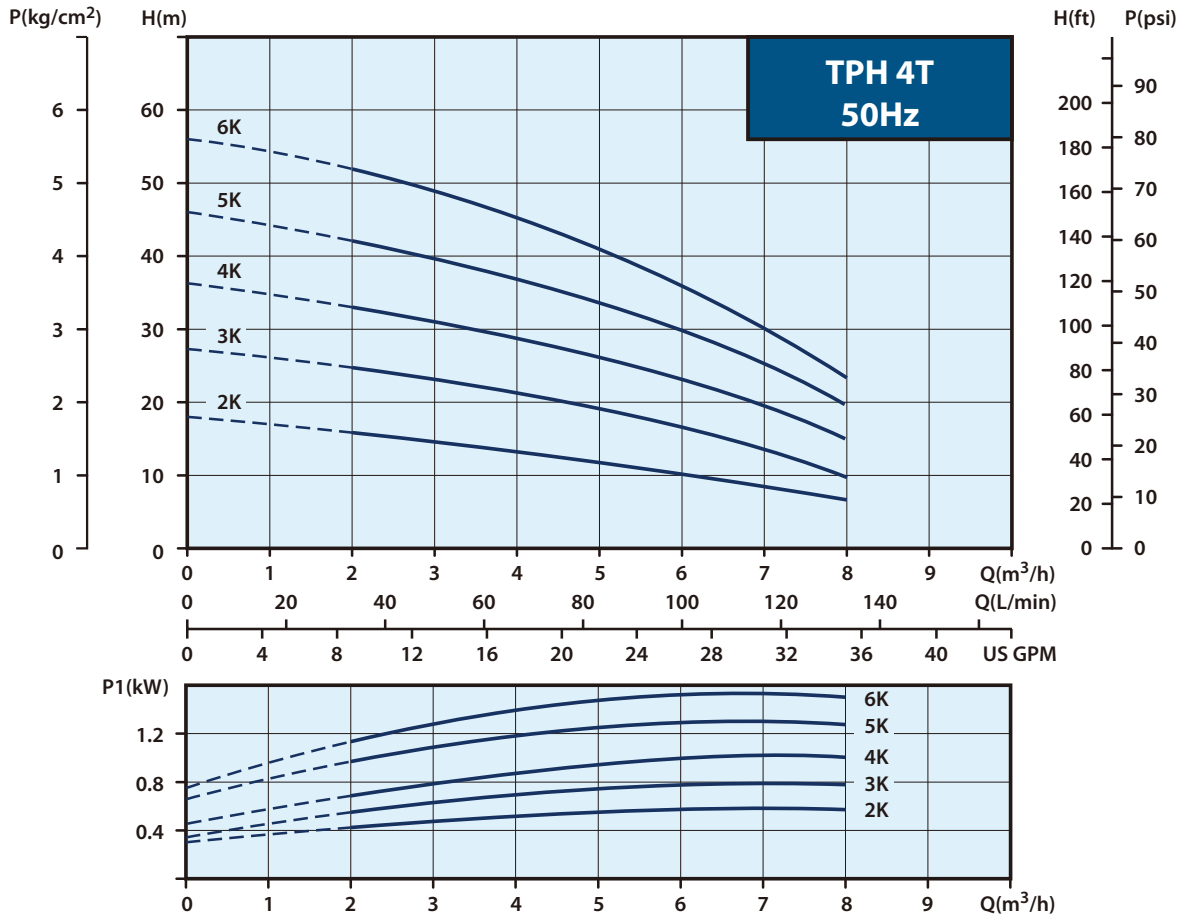
Electrical data, 50/60Hz

| Model | PH (Ø) | voltage code | Cycle (Hz) | Volts (V) | Input Power (W) | Input Ampere (A) |
|-----------|--------|--------------|------------|-------------------|-----------------|-------------------|
| TPH 4T 2K | 3 | 3Z | 50 | 200-255 / 380-440 | 650 | 2.2-2.9 / 1.4-1.7 |
| | | | 60 | 200-255 / 380-480 | 960 | 3.0-2.7 / 1.7-1.7 |
| TPH 4T 3K | 3 | 3Z | 50 | 200-255 / 380-440 | 850 | 3.1-3.6 / 1.8-2.1 |
| | | | 60 | 200-255 / 380-480 | 1290 | 4.0-3.6 / 2.4-2.4 |
| TPH 4T 4K | 3 | 4U | 50 | 200-240 / 380-415 | 1080 | 3.4-3.5 / 2.0-2.0 |
| | | | 60 | 200-240 / 380-440 | 1620 | 4.5-5.0 / 2.9-2.9 |
| TPH 4T 5K | 3 | 4U | 50 | 200-240 / 380-415 | 1440 | 4.9-6.8 / 3.0-3.8 |
| | | | 60 | 200-240 / 380-440 | 2100 | 6.2-6.0 / 3.5-3.5 |
| TPH 4T 6K | 3 | 4U | 50 | 200-240 / 380-415 | 1740 | 6.3-9.9 / 4.2-5.5 |
| | | | 60 | 200-240 / 380-440 | 2400 | 7.7-7.6 / 4.5-4.5 |

Electrical data, 60Hz

| Model | PH (Ø) | voltage code | Cycle (Hz) | Volts (V) | Input Power (W) | Input Ampere (A) |
|-----------|--------|--------------|------------|-----------|-----------------|------------------|
| TPH 4T 2K | 1 | 1B | 60 | 220 | 1030 | 5.3 |
| TPH 4T 3K | 1 | 1B | 60 | 220 | 1500 | 7.0 |
| TPH 4T 4K | 1 | 1B | 60 | 220 | 1760 | 8.6 |
| TPH 4T 5K | 1 | 1B | 60 | 220 | 2100 | 10.0 |
| TPH 4T 6K | 1 | 1B | 60 | 220 | 2600 | 12.0 |

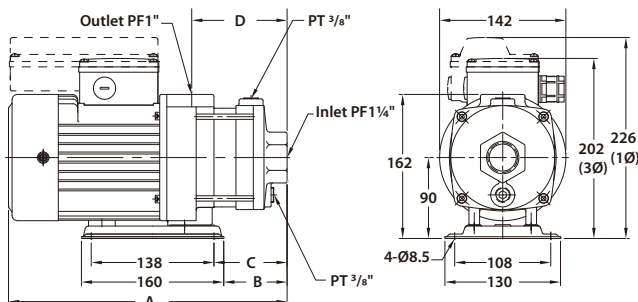
Performance curves





Electrical data, 50Hz

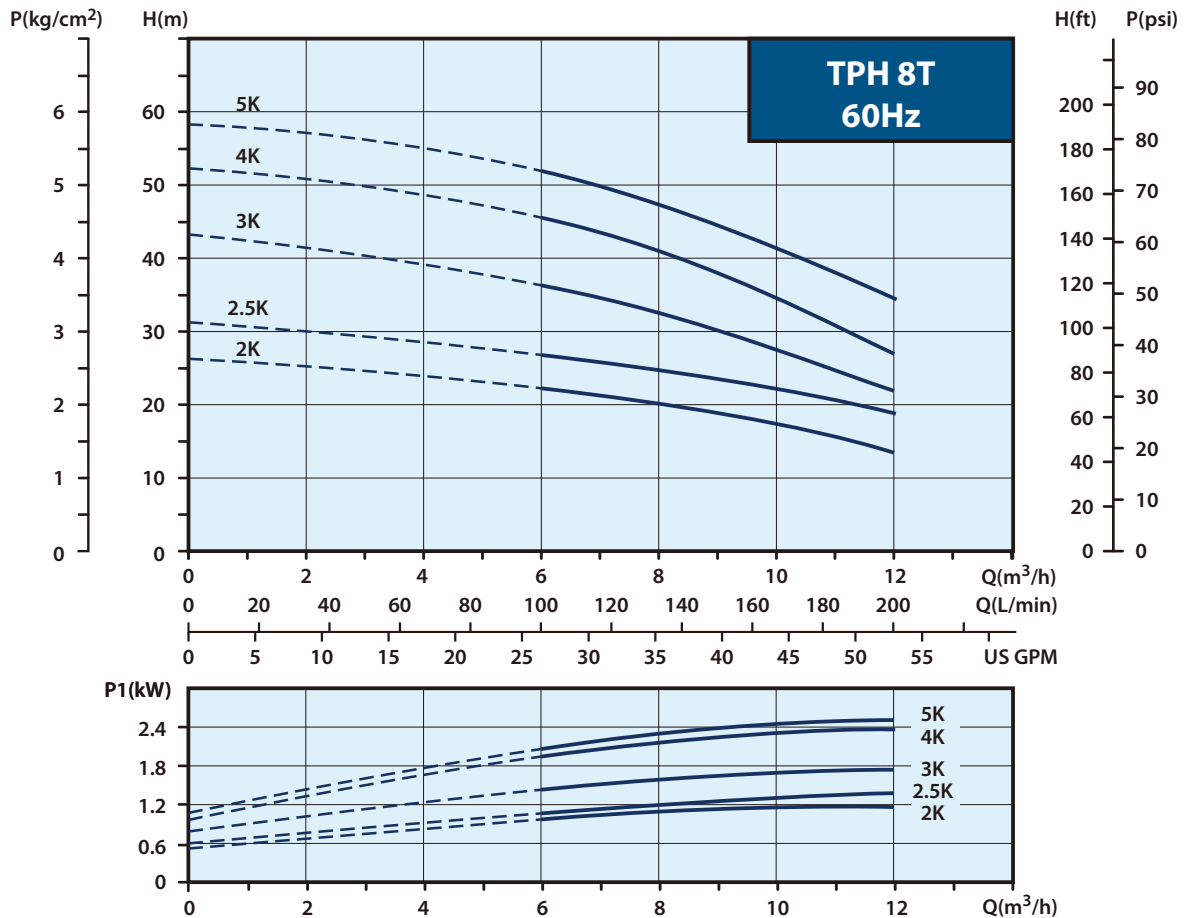
| Model | PH (Ø) | voltage code | Cycle (Hz) | Volts (V) | Input Power (W) | Input Ampere (A) |
|-----------|--------|--------------|------------|-------------------|-----------------|------------------|
| TPH 4T 2K | 1 | 1R | 50 | 200-240 | 600 | 3.1-2.9 |
| | 3 | 3Q | 50 | 200-240 / 380-440 | 600 | 2.3 / 1.4 |
| TPH 4T 3K | 1 | 1R | 50 | 200-240 | 950 | 4.5 |
| | 3 | 3Q | 50 | 200-240 / 380-440 | 830 | 3.3 / 2.1 |
| TPH 4T 4K | 1 | 1R | 50 | 200-240 | 1200 | 5.7 |
| | 3 | 3Q | 50 | 200-240 / 380-440 | 1010 | 3.7 / 2.2 |
| TPH 4T 5K | 1 | 1R | 50 | 200-240 | 1370 | 6.9 |
| | 3 | 3Q | 50 | 200-240 / 380-440 | 1300 | 4.1 / 2.4 |
| TPH 4T 6K | 1 | 1R | 50 | 200-240 | 1470 | 7.7 |
| | 3 | 3Q | 50 | 200-240 / 380-440 | 1640 | 5.5 / 3.5 |

Dimensions (mm)



| Model | A(mm) | B(mm) | C(mm) | D(mm) | N.W.(kg) | 36 pcs |
|-----------|-------|-------|-------|-------|----------|---|
| TPH 4T 2K | 315 | 73 | 84 | 109 | 11.7 |  |
| TPH 4T 3K | 381 | 99 | 110 | 135 | 13.3 | 30 pcs  |
| TPH 4T 4K | 408 | 126 | 137 | 162 | 14.1 | |
| TPH 4T 5K | 435 | 153 | 164 | 189 | 14.2 | |
| TPH 4T 6K | 493 | 181 | 192 | 217 | 16.1 | |

Performance curves



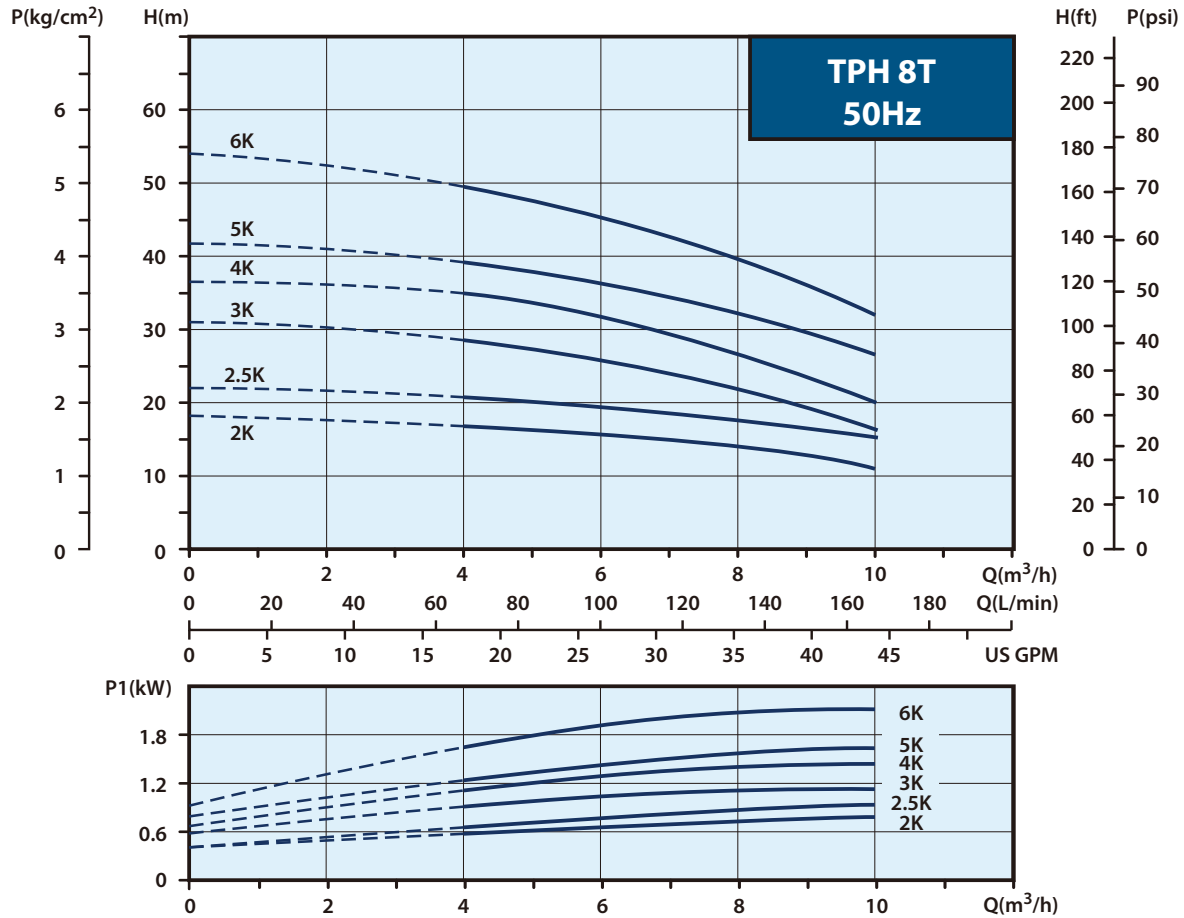
Electrical data, 50/60Hz

| Model | PH (Ø) | voltage code | Cycle (Hz) | Volts (V) | Input Power (W) | Input Ampere (A) |
|-------------|--------|--------------|------------|-------------------|-----------------|-------------------|
| TPH 8T 2K | 3 | 3Z | 50 | 200-255 / 380-440 | 850 | 3.1-3.6 / 1.8-2.1 |
| | | | 60 | 200-255 / 380-480 | 1290 | 4.0-3.6 / 2.4-2.4 |
| TPH 8T 2.5K | 3 | 4U | 50 | 200-240 / 380-415 | 980 | 3.1-3.3 / 1.8-2.0 |
| | | | 60 | 200-240 / 380-440 | 1460 | 4.4-4.1 / 2.4-2.4 |
| TPH 8T 3K | 3 | 4U | 50 | 200-240 / 380-415 | 1400 | 4.9-6.8 / 3.0-3.8 |
| | | | 60 | 200-240 / 380-440 | 2100 | 6.2-6.0 / 3.5-3.5 |
| TPH 8T 4K | 3 | 4U | 50 | 200-240 / 380-415 | 1780 | 5.5-8.7 / 3.8-4.9 |
| | | | 60 | 200-240 / 380-440 | 2460 | 7.6-7.2 / 4.4-4.4 |
| TPH 8T 5K | 3 | 4U | 50 | 200-240 / 380-415 | 2000 | 5.9-8.5 / 3.8-5.0 |
| | | | 60 | 200-240 / 380-440 | 2700 | 8.1-7.8 / 4.6-4.6 |

Electrical data, 60Hz

| Model | PH (Ø) | voltage code | Cycle (Hz) | Volts (V) | Input Power (W) | Input Ampere (A) |
|-------------|--------|--------------|------------|-----------|-----------------|------------------|
| TPH 8T 2K | 1 | 1B | 60 | 220 | 1500 | 7.0 |
| TPH 8T 2.5K | 1 | 1B | 60 | 220 | 1720 | 8.7 |
| TPH 8T 3K | 1 | 1B | 60 | 220 | 1970 | 10.0 |

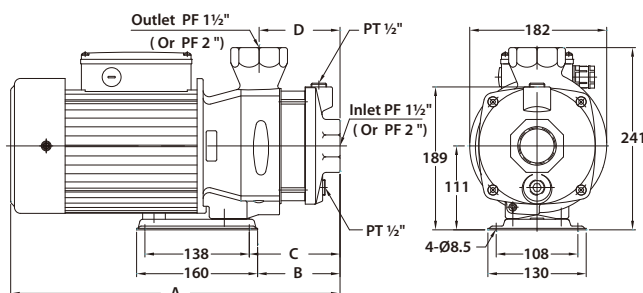
Performance curves



Electrical data, 50Hz

| Model | PH (Ø) | voltage code | Cycle (Hz) | Volts (V) | Input Power (W) | Input Ampere (A) |
|-----------|--------|--------------|------------|-------------------|-----------------|------------------|
| TPH 8T 2K | 1 | 1R | 50 | 200-240 | 900 | 4.3 |
| | 3 | 3Q | 50 | 200-240 / 380-440 | 810 | 3.0 / 1.9 |
| TPH 8T 3K | 1 | 1R | 50 | 200-240 | 1300 | 6.3 |
| | 3 | 3Q | 50 | 200-240 / 380-440 | 1110 | 3.3 / 2.1 |
| TPH 8T 4K | 1 | 1R | 50 | 200-240 | 1520 | 7.6 |
| | 3 | 3Q | 50 | 200-240 / 380-440 | 1600 | 5.6 / 3.5 |
| TPH 8T 5K | 3 | 3Q | 50 | 200-240 / 380-440 | 2000 | 6.0 / 3.6 |
| TPH 8T 6K | 3 | 3Q | 50 | 200-240 / 380-440 | 2230 | 6.7 / 3.9 |

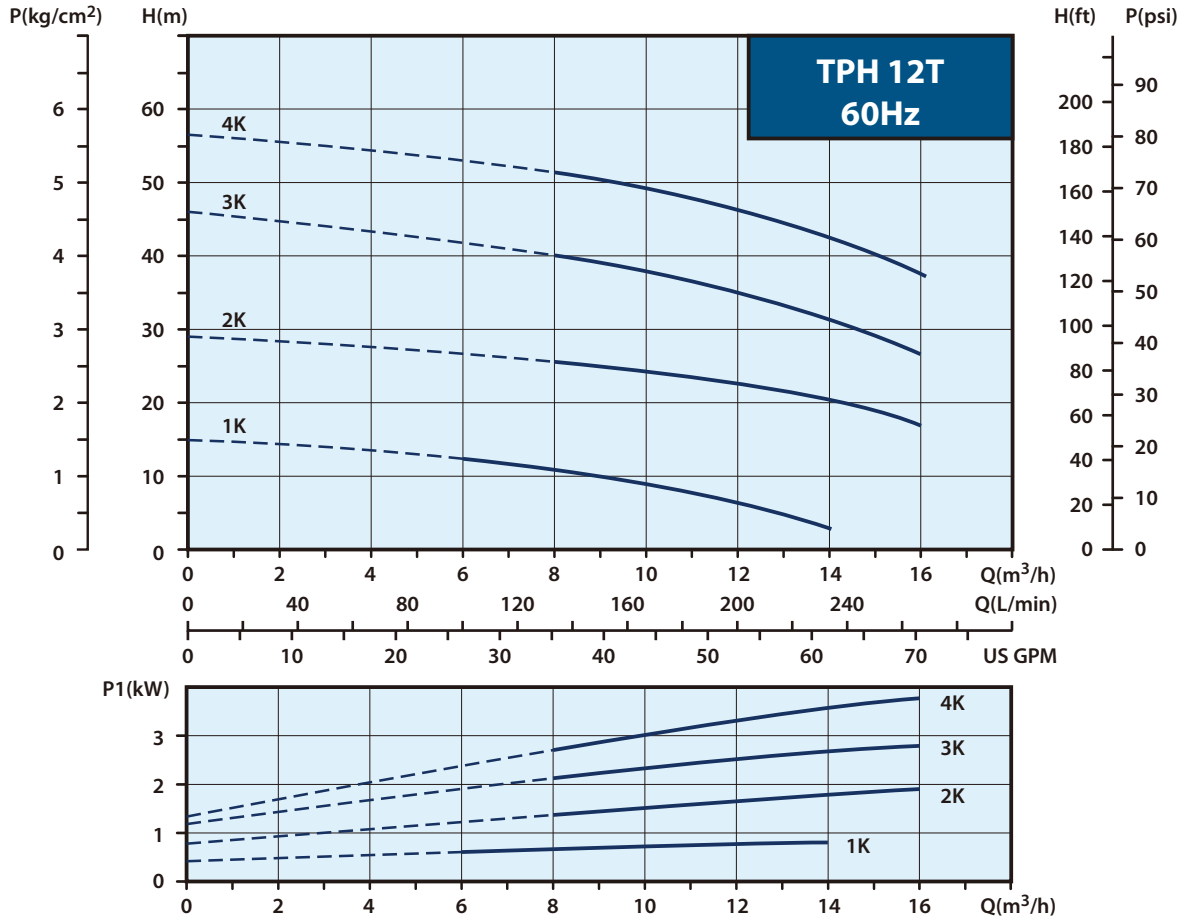
Dimensions (mm)



| Model | A(mm) | B(mm) | C(mm) | D(mm) | N.W.(kg) |
|--------------|-------|-------|-------|-------|----------|
| TPH 8T 2K | 375 | 77 | 88 | 75 | 18.8 |
| TPH 8T 2.5 K | 407 | 109 | 120 | 107 | 19.5 |
| TPH 8T 3K | 407 | 109 | 120 | 107 | 20.0 |
| TPH 8T 4K | 435 | 109 | 120 | 107 | 25.4 |
| TPH 8T 5K | 473 | 143 | 154 | 141 | 25.5 |
| TPH 8T 6K | 473 | 143 | 154 | 141 | 25.5 |

24 pcs

Performance curves



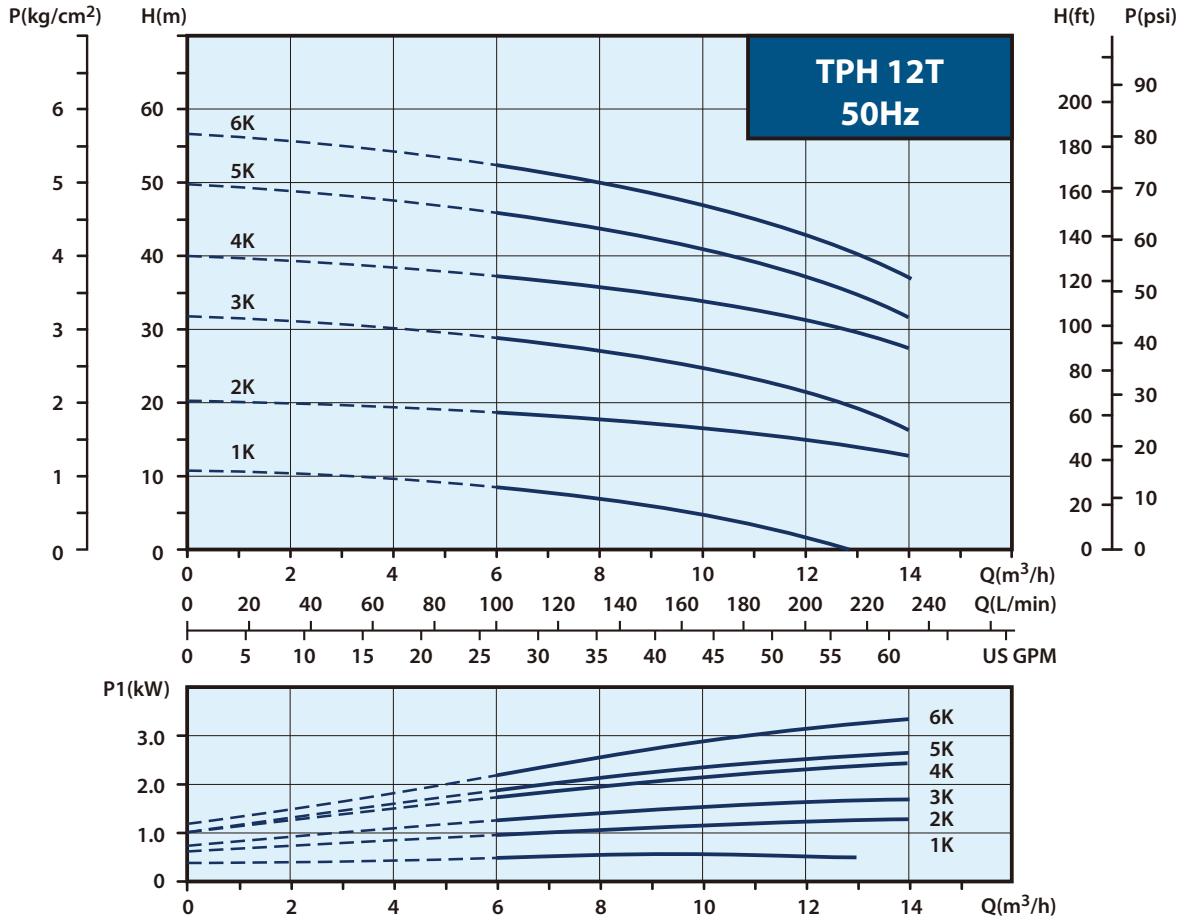
Electrical data, 50/60Hz

| Model | PH (Ø) | voltage code | Cycle (Hz) | Volts (V) | Input Power (W) | Input Ampere (A) |
|------------|--------|--------------|------------|-------------------|-----------------|---------------------|
| TPH 12T 1K | 3 | 3Z | 50 | 200-255 / 380-440 | 600 | 2.2-2.9 / 1.4-1.7 |
| | | | 60 | 200-255 / 380-480 | 860 | 2.6-2.6 / 1.7-1.7 |
| TPH 12T 2K | 3 | 4U | 50 | 200-240 / 380-415 | 1500 | 4.9-6.8 / 3.0-3.8 |
| | | | 60 | 200-240 / 380-440 | 2200 | 6.2-6.0 / 3.5-3.5 |
| TPH 12T 3K | 3 | 4U | 50 | 200-240 / 380-415 | 2000 | 6.2-8.8 / 3.9-5.0 |
| | | | 60 | 200-240 / 380-440 | 2900 | 8.8-8.0 / 4.9-4.9 |
| TPH 12T 4K | 3 | 4U | 50 | 200-240 / 380-415 | 2900 | 9.0-13.1 / 5.8-7.9 |
| | | | 60 | 200-240 / 380-440 | 4100 | 12.4-11.2 / 6.7-6.7 |

Electrical data, 60Hz

| Model | PH (Ø) | voltage code | Cycle (Hz) | Volts (V) | Input Power (W) | Input Ampere (A) |
|------------|--------|--------------|------------|-----------|-----------------|------------------|
| TPH 12T 1K | 1 | 1B | 60 | 220 | 1030 | 5.3 |
| TPH 12T 2K | 1 | 1B | 60 | 220 | 2200 | 11.2 |

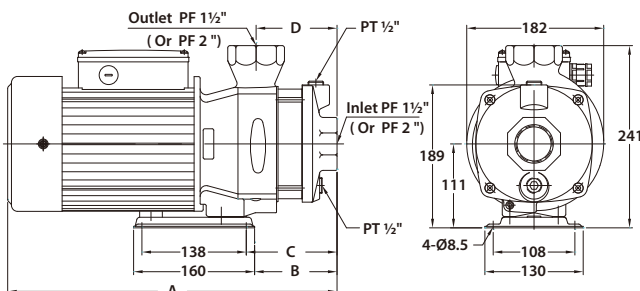
Performance curves



Electrical data, 50Hz

| Model | PH (Ø) | voltage code | Cycle (Hz) | Volts (V) | Input Power (W) | Input Ampere (A) |
|------------|--------|--------------|------------|-------------------|-----------------|------------------|
| TPH 12T 2K | 1 | 1R | 50 | 200-240 | 1380 | 6.5 |
| | 3 | 3Q | 50 | 200-240 / 380-440 | 1140 | 3.6 / 2.1 |
| TPH 12T 3K | 1 | 1R | 50 | 200-240 | 1700 | 7.9 |
| | 3 | 3Q | 50 | 200-240 / 380-440 | 1580 | 5.8 / 3.6 |
| TPH 12T 4K | 3 | 3Q | 50 | 200-240 / 380-440 | 2500 | 7.1 / 4.1 |
| TPH 12T 5K | 3 | 3Q | 50 | 200-240 / 380-440 | 3050 | 10.8 / 6.8 |
| TPH 12T 6K | 3 | 3Q | 50 | 200-240 / 380-440 | 3700 | 11.3 / 7.0 |

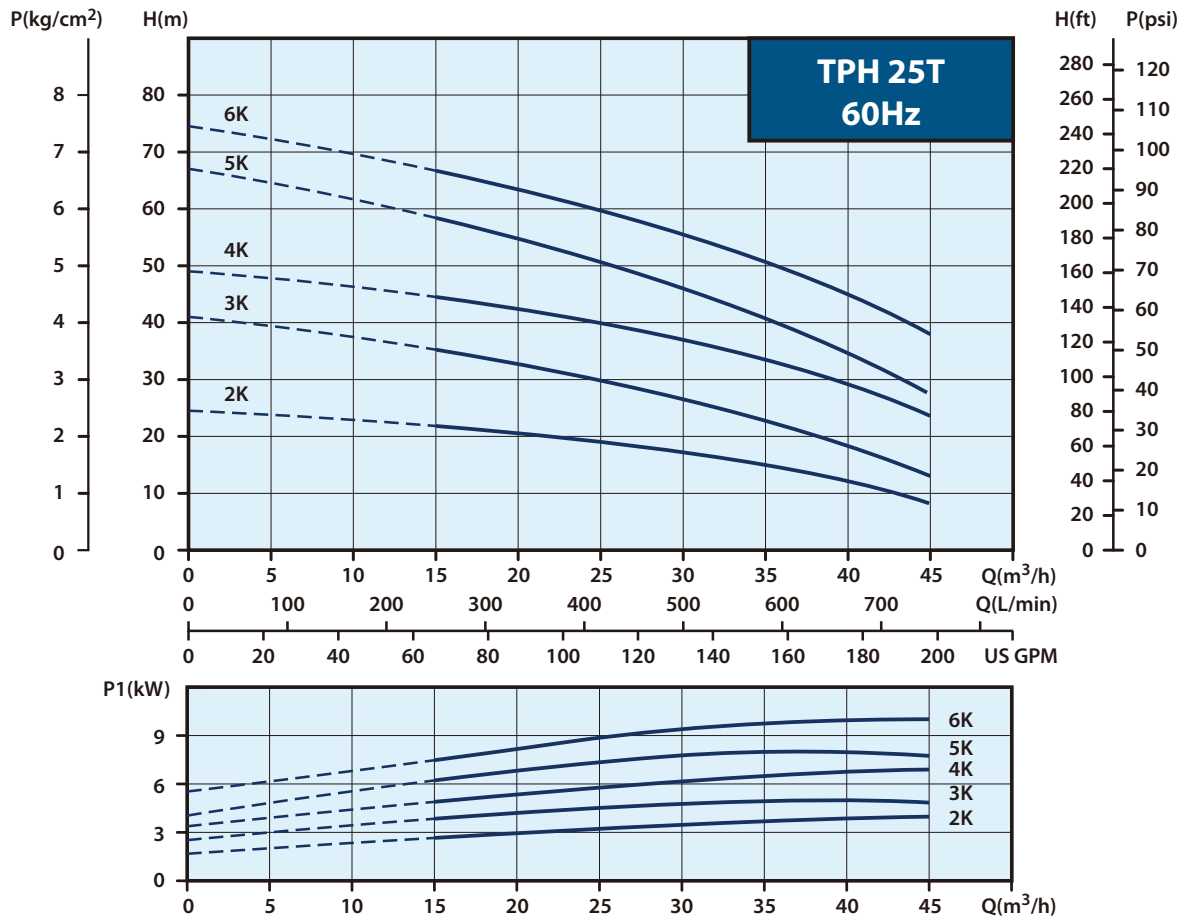
Dimensions (mm)



| Model | A(mm) | B(mm) | C(mm) | D(mm) | N.W.(kg) |
|------------|-------|-------|-------|-------|----------|
| TPH 12T 1K | 335 | 77 | 88 | 75 | 17.6 |
| TPH 12T 2K | 375 | 77 | 88 | 75 | 20.0 |
| TPH 12T 3K | 435 | 109 | 120 | 107 | 25.4 |
| TPH 12T 4K | 435 | 109 | 120 | 107 | 28.0 |
| TPH 12T 5K | 473 | 143 | 154 | 141 | 29.2 |
| TPH 12T 6K | 473 | 143 | 154 | 141 | 29.2 |

24 pcs

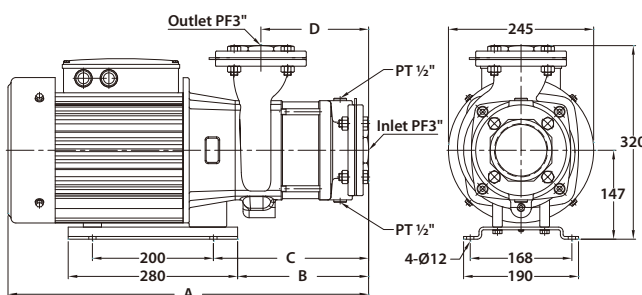
Performance curves



Electrical data, 60Hz

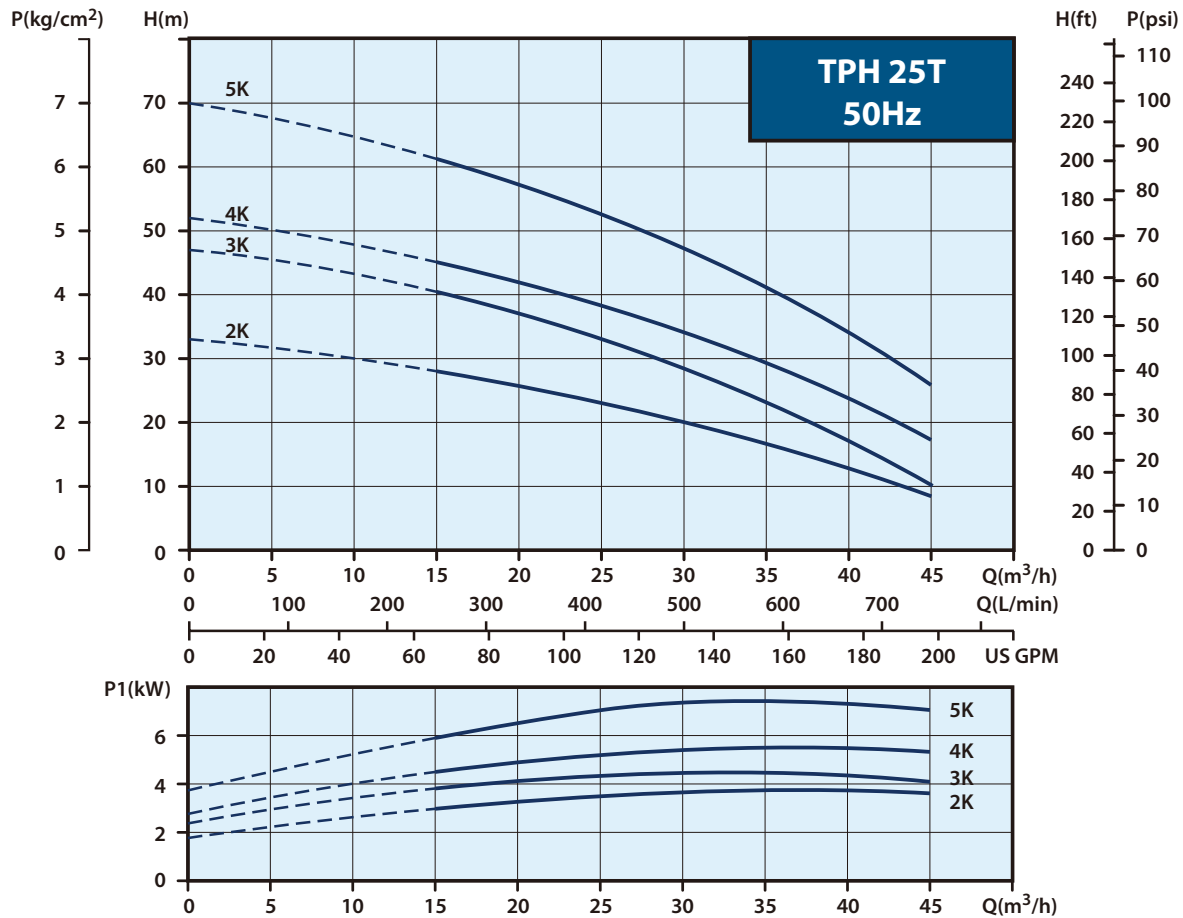
| Model | PH (Ø) | voltage code | Cycle (Hz) | Volts (V) | Input Power (W) | Input Ampere (A) |
|-------------|--------|--------------|------------|-------------------|-----------------|-----------------------|
| TPH 25T 2KF | 3 | 6Z | 60 | 200-255 / 380-480 | 4000 | 12.9-10.5 / 7.3-5.8 |
| TPH 25T 3KF | 3 | 6Z | 60 | 200-255 / 380-480 | 5100 | 15.6-13.1 / 8.7-8.2 |
| TPH 25T 4KF | 3 | 6Z | 60 | 200-255 / 380-480 | 7200 | 21.2-20.5 / 12.3-12.5 |
| TPH 25T 5KF | 3 | 6Z | 60 | 200-255 / 380-480 | 8000 | 25.6-22.4 / 13.7-13.2 |
| TPH 25T 6KF | 3 | 6Z | 60 | 200-255 / 380-480 | 10200 | 31.2-27.5 / 17.5-15.8 |

Dimensions (mm), 60Hz



| Model | A(mm) | B(mm) | C(mm) | D(mm) | N.W.(kg) |
|------------|-------|-------|-------|-------|----------|
| TPH 25T2KF | 536 | 156.5 | 196.5 | 120 | 51.0 |
| TPH 25T3KF | 596 | 216.5 | 256.5 | 180 | 56.8 |
| TPH 25T4KF | 596 | 216.5 | 256.5 | 180 | 57.0 |
| TPH 25T5KF | 706 | 276.5 | 316.5 | 240 | 68.8 |
| TPH 25T6KF | 706 | 276.5 | 316.5 | 240 | 69.0 |

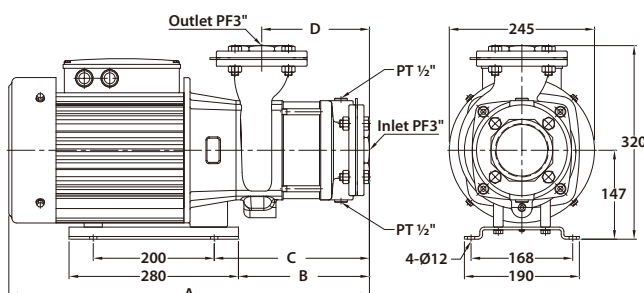
Performance curves



Electrical data, 50Hz

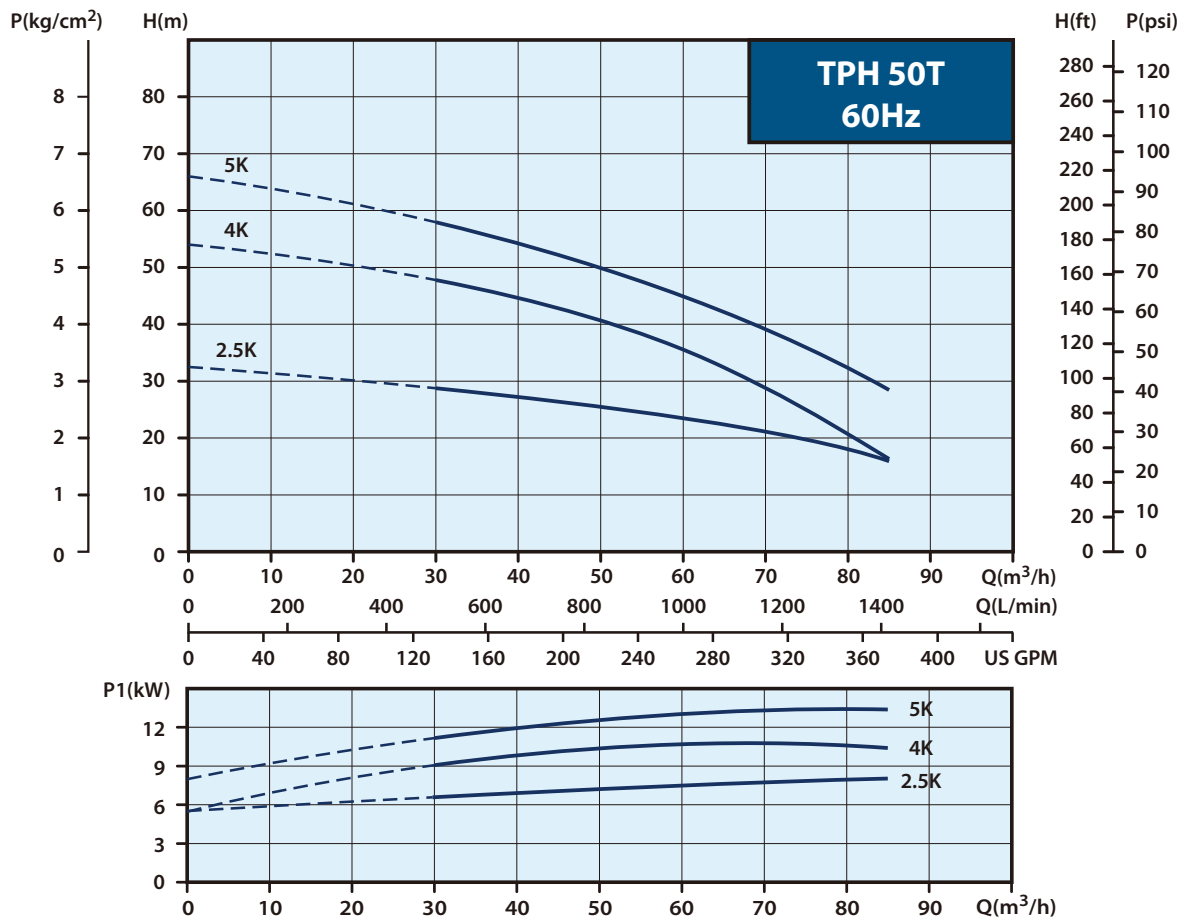
| Model | PH (Ø) | voltage code | Cycle (Hz) | Volts (V) | Input Power (W) | Input Ampere (A) |
|-------------|--------|--------------|------------|-------------------|-----------------|------------------|
| TPH 25T 2KF | 3 | 3Q | 50 | 200-240 / 380-440 | 4000 | 12.0 / 6.5 |
| TPH 25T 3KF | 3 | 3Q | 50 | 200-240 / 380-440 | 4800 | 15.6 / 10.0 |
| TPH 25T 4KF | 3 | 3Q | 50 | 200-240 / 380-440 | 5700 | 18.0 / 11.3 |
| TPH 25T 5KF | 3 | 3Q | 50 | 200-240 / 380-440 | 7800 | 24.1 / 13.9 |

Dimensions (mm), 50Hz



| Model | A(mm) | B(mm) | C(mm) | D(mm) | N.W.(kg) |
|------------|-------|-------|-------|-------|----------|
| TPH 25T2KF | 596 | 216.5 | 256.5 | 180 | 53.0 |
| TPH 25T3KF | 656 | 276.5 | 316.5 | 240 | 58.8 |
| TPH 25T4KF | 656 | 276.5 | 316.5 | 240 | 59.0 |
| TPH 25T5KF | 766 | 336.5 | 376.5 | 300 | 71.0 |

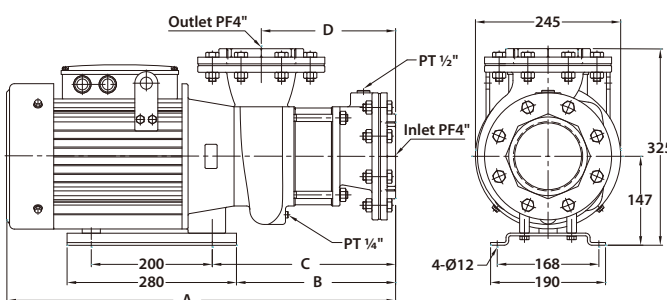
Performance curves



Electrical data, 60Hz

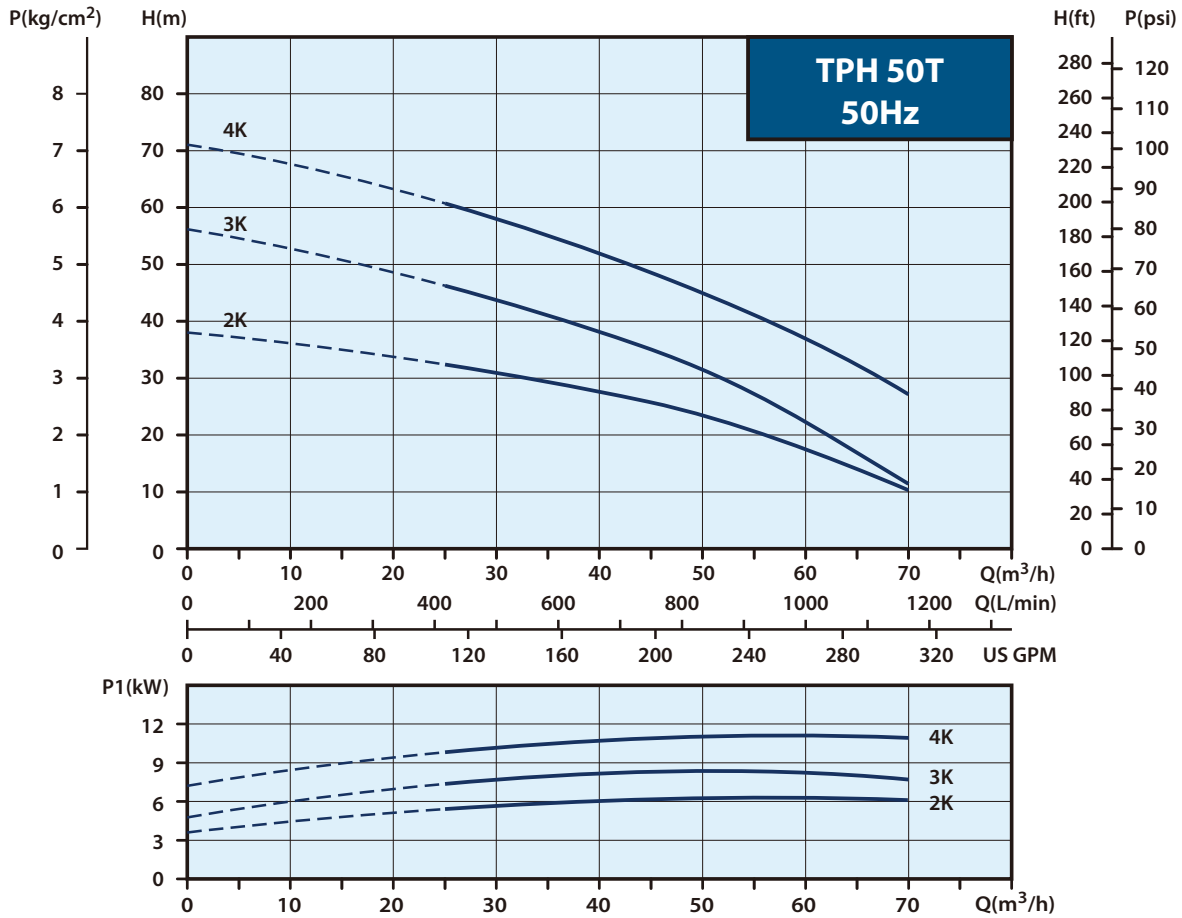
| Model | PH (Ø) | voltage code | Cycle (Hz) | Volts (V) | Input Power (W) | Input Ampere (A) |
|----------------|--------|--------------|------------|-------------------|-----------------|-----------------------|
| TPH 50 T 2.5KF | 3 | 6Q | 60 | 200-240 / 380-440 | 8500 | 25.0-23.3 / 14.1-14.8 |
| TPH 50 T 4 KF | 3 | 6Z | 60 | 200-255 / 380-480 | 11500 | 34.8-32.2 / 19.1-21.7 |
| TPH 50 T 5 KF | 3 | 6Q | 60 | 200-240 / 380-440 | 14200 | 44.3-42.6 / 23.9-26.3 |

Dimensions (mm), 60Hz



| Model | A(mm) | B(mm) | C(mm) | D(mm) | N.W.(kg) |
|---------------|-------|-------|-------|-------|----------|
| TPH 50T 2.5KF | 582.5 | 203 | 243 | 162 | 55.6 |
| TPH 50T 4KF | 692.5 | 263 | 303 | 222 | 77.6 |
| TPH 50T 5KF | 742.5 | 263 | 303 | 222 | 86.7 |

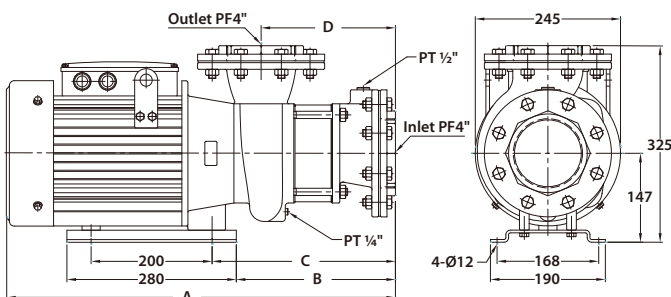
Performance curves



Electrical data, 50Hz

| Model | PH (Ø) | voltage code | Cycle (Hz) | Volts (V) | Input Power (W) | Input Ampere (A) |
|---------------|--------|--------------|------------|-------------------|-----------------|-----------------------|
| TPH 50 T 2 KF | 3 | 3Q | 50 | 200-240 / 380-440 | 6600 | 20.3-19.2 / 11.2-12.9 |
| TPH 50 T 3 KF | 3 | 3Q | 50 | 200-240 / 380-440 | 8700 | 26.0-22.6 / 14.4-14.8 |
| TPH 50 T 4 KF | 3 | 3Q | 50 | 200-240 / 380-440 | 11600 | 36.3-30.8 / 19.8-20.4 |

Dimensions (mm), 50Hz



| Model | A(mm) | B(mm) | C(mm) | D(mm) | N.W.(kg) |
|-------------|-------|-------|-------|-------|----------|
| TPH 50T 2KF | 642.5 | 263 | 303 | 222 | 61.5 |
| TPH 50T 3KF | 752.5 | 323 | 363 | 282 | 80.6 |
| TPH 50T 4KF | 802.5 | 323 | 363 | 282 | 88.0 |