

TPRK Series

Immersible Pump



台灣精品
TAIWAN EXCELLENCE
2020



WALRUS
WALRUS PUMP CO., LTD.

Contents

General Data	2
Sectional Drawing	3
Dimensions	5
Performance Curves/Technical Data	
TPRK 1T	6
TPRK 3T	8
TPRK 5T	10

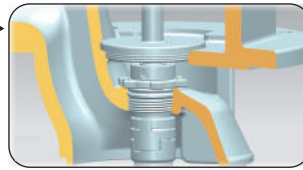
TPRK Series Immersible Pump



TPRK



TPRK_E



50Hz

Power: 1.5 - 5.5 kW

Head: Up to 240 M

Flow: Up to 140 L/min

60Hz

Power: 1.5 - 7.5 kW

Head: Up to 240 M

Flow: Up to 170 L/min

Outlet: Rp1¼"

Applications

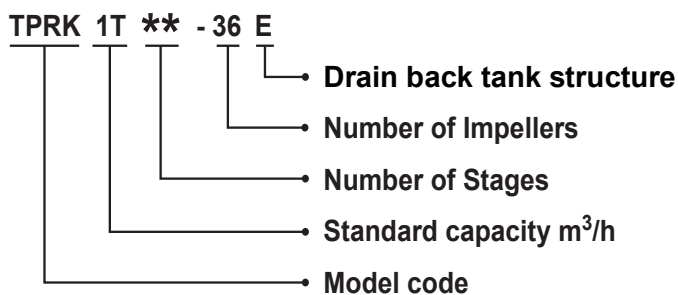
The TPRK Series is vertical multistage centrifugal pump, designed for industrial use, specially for machine tools, to carry fluids such as water, coolant, light oil and other clean, non aggressive matters.

- Industrial circulation system
- Washing/cleaning system
- Filtration system

Operating Conditions

1. Liquid temperature : +0°C ~ +90°C
2. Ambient temperature : Max. +40°C
3. Operating pressure : Max.15 kg/cm²
4. Submerged depth : Min. 40mm
5. Stainer Diameter : Ø2mm
6. Particle Size : Below 2mm
7. Liquids maximum content of solid particles in suspension : 50 g/m³

Model code



Pump Construction

Immersible vertical multistage centrifugal pump, self-priming, coupling connection between pump and motor, stainless steel construction design ensures corrosion-free operation. By the Drain back tank structure, that the liquid remains in the tank even the mechanical seal leakage, and use cartridge mechanical seal for easy maintenance.

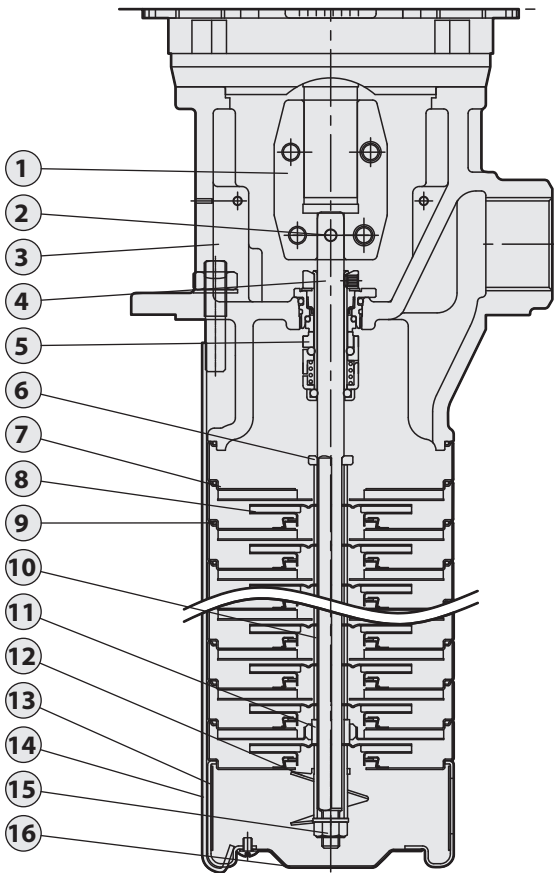
Motor

Nominal speed : 2900 or 3500 rpm
 Frequency range : 50 or 60 Hz
 Standard voltages : 3Ø 198-242 / 342-418V
 Enclosure class : IP54
 Insulation class : F.

TPRK Series Immersible Pump

Sectional drawing

TPRK



Materials

No.	Part name	Material
1	Coupling	SUS304/FC200
2	Pin	SUS304
3	Pump Casing	Cast iron FCD450
4	Shaft	SUS304
5	Mechanical Seal	RSSH
6	Sleeve	SUS304
7	Intermediate Chamber	SUS304
8	Impeller	SUS304
9	O-ring	HNBR
10	Sleeve(Impeller)	SUS304
11	Bearing	SIC
12	Priming Screw	SUS304
13	Suction interconnector	SUS304
14	Strap	SUS304
15	Lock Nut	SUS304
16	Filter	SUS304

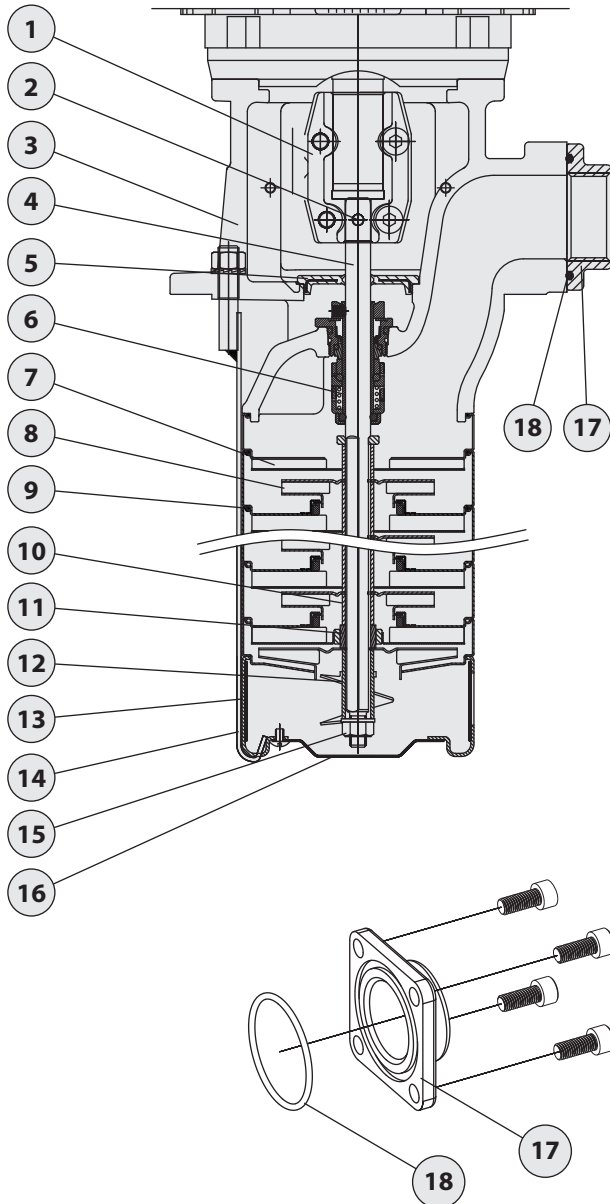
Options on request

- Special mechanical seal

Mechanical seal type	Material	
	Stationary Face/ Rotary Face	Cup Gasket & O Ring
RSSH RSSV RSSE	(S)Silicon carbide/ (S)Silicon carbide	(H) HNBR (V) Viton (E) EPDM

Sectional drawing

TPRK_E



Materials

No.	Part name	Material
1	Coupling	SUS304/FC45
2	Pin	SUS304
3	Pump Casing	Cast iron FCD45
4	Shaft	SUS304
5	Flap	NBR+SPCC
6	Mechanical Seal	RSSH
7	Intermediate Chamber	SUS304
8	Impeller	SUS304
9	O-ring	HNBR
10	Sleeve(Impeller)	SUS304
11	Bearing	SIC
12	Priming Screw	SUS304
13	Suction interconnector	SUS304
14	Strap	SUS304
15	Lock Nut	SUS304
16	Filter	SUS304
17	Flange	SUS304
18	O-ring	HNBR

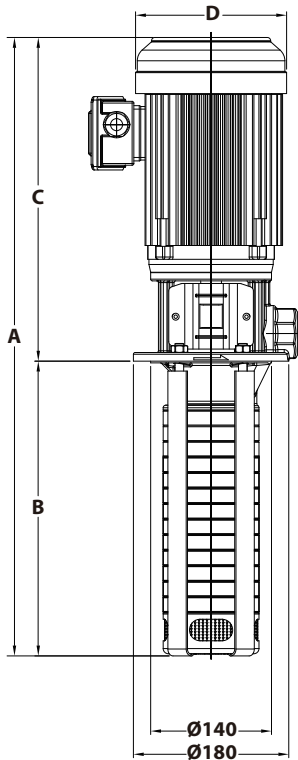
Options on request

- Special mechanical seal

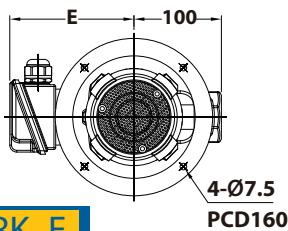
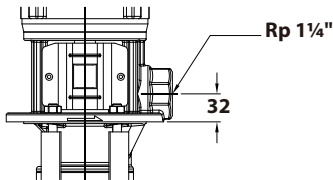
Mechanical seal type	Material	
	Stationary Face/ Rotary Face	Cup Gasket & O Ring
RSSH RSSV RSSE	(S)Silicon carbide/ (S)Silicon carbide	(H) HNBR (V) Viton (E) EPDM

TPRK Series Immersible Pump

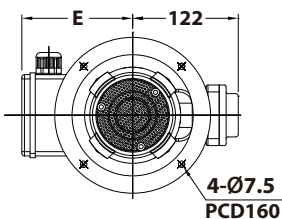
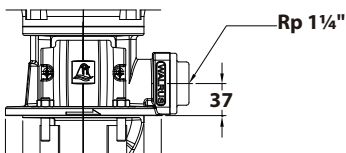
Dimensions (mm)



TPRK

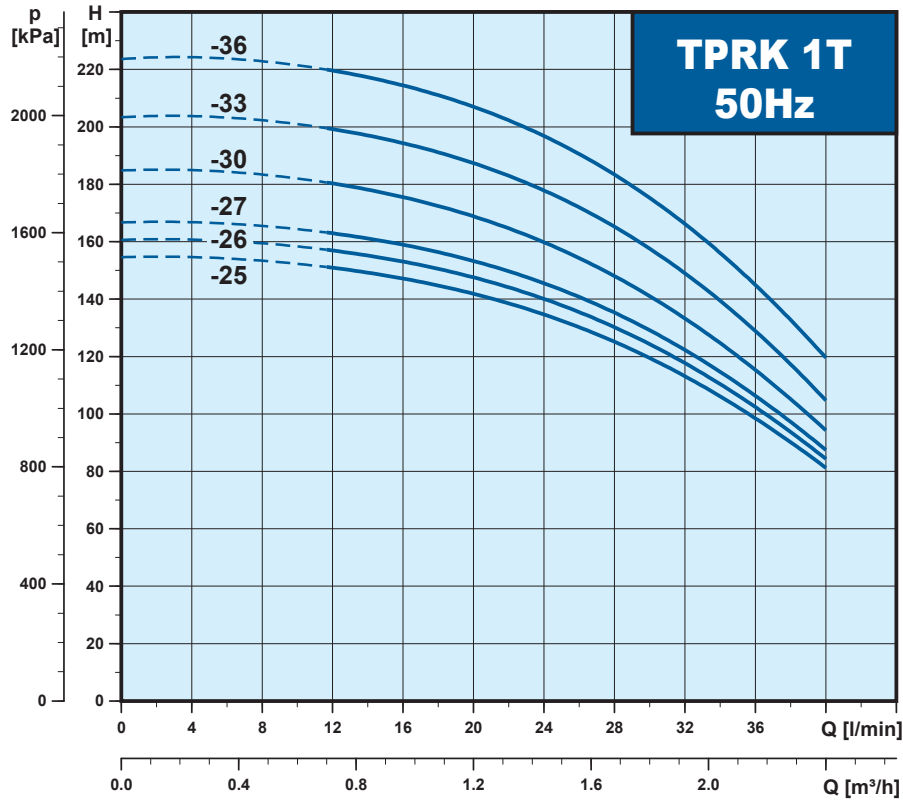


TPRK_E



Model	A (mm)	B (mm)	C (mm)	D (mm)	E (mm)	N.W. (kg)	
TPRK 1T 50Hz							
TPRK1T 25-25	951	576	375	175	142	28.7	6
TPRK1T 26-26	969	594	375	175	142	29.0	6
TPRK1T 27-27	987	612	375	175	142	29.3	6
TPRK1T 30-30	1041	666	375	175	142	30.0	6
TPRK1T 33-33	1095	720	375	175	142	30.8	6
TPRK1T 36-36	1149	774	375	175	142	31.6	6
TPRK 1T 60Hz							
TPRK1T 15-15	771	396	375	175	142	26.1	6
TPRK1T 17-17	807	432	375	175	142	26.6	6
TPRK1T 19-19	843	468	375	175	142	27.2	6
TPRK1T 21-21	879	504	375	175	142	27.7	6
TPRK1T 22-22	897	522	375	175	142	28.0	6
TPRK1T 23-23	915	540	375	175	142	28.2	6
TPRK1T 25-25	951	576	375	175	142	28.7	6
TPRK1T 26-26	1032	594	438	219	173	44.4	6
TPRK1T 27-27	1050	612	438	219	173	44.7	6
TPRK 3T 50Hz							
TPRK3T 17-17	807	432	375	175	142	26.6	6
TPRK3T 19-19	843	468	375	175	142	27.2	6
TPRK3T 21-21	879	504	375	175	142	27.7	6
TPRK3T 22-22	897	522	375	175	142	28.0	6
TPRK3T 23-23	915	540	375	175	142	28.2	6
TPRK3T 25-25	951	576	375	175	142	28.7	6
TPRK3T 26-26	969	594	375	175	142	29.0	6
TPRK3T 27-27	987	612	375	175	142	29.3	6
TPRK3T 30-30	1104	666	438	219	173	44.7	6
TPRK3T 33-33	1158	720	438	219	173	45.4	6
TPRK3T 36-36	1212	774	438	219	173	46.3	6
TPRK 3T 60Hz							
TPRK3T 9 - 9	663	288	375	175	142	24.6	6
TPRK3T 10-10	681	306	375	175	142	24.8	6
TPRK3T 11-11	699	324	375	175	142	25.1	6
TPRK3T 12-12	717	342	375	175	142	25.3	6
TPRK3T 13-13	735	360	375	175	142	26.6	6
TPRK3T 15-15	771	396	375	175	142	26.1	6
TPRK3T 17-17	807	432	375	175	142	26.6	6
TPRK3T 19-19	906	468	438	219	173	42.7	6
TPRK3T 21-21	942	504	438	219	173	43.2	6
TPRK3T 22-22	960	522	438	219	173	43.4	6
TPRK3T 23-23	978	540	438	219	173	43.7	6
TPRK3T 25-25	1014	576	438	219	173	47.2	6
TPRK3T 26-26	1032	594	438	219	173	47.5	6
TPRK 5T 50Hz							
TPRK5T 9 - 9	735	360	375	175	142	26.0	6
TPRK5T 10-10	762	387	375	175	142	26.4	6
TPRK5T 12-12	816	441	375	175	142	27.1	6
TPRK5T 14-14	870	495	375	175	142	27.8	6
TPRK5T 16-16	924	549	375	175	142	28.5	6
TPRK5T 17-17	1014	576	438	219	173	44.3	6
TPRK5T 18-18	1041	603	438	219	173	44.6	6
TPRK5T 19-19	1068	630	438	219	173	45.0	6
TPRK5T 20-20	1095	657	438	219	173	45.7	6
TPRK5T 21-21	1122	684	438	219	173	46.1	6
TPRK5T 22-22	1149	711	438	219	173	48.4	6
TPRK5T 24-24	1203	765	438	219	173	49.1	6
TPRK5T 26-26	1257	819	438	219	173	49.8	6
TPRK5T 29-29	1338	900	438	219	173	50.9	-
TPRK5T 32-32	1497	981	516	268	201	78.7	-
TPRK 5T 60Hz							
TPRK5T 5 - 5	627	252	375	175	142	24.6	6
TPRK5T 6 - 6	654	279	375	175	142	25.0	6
TPRK5T 7 - 7	681	306	375	175	142	25.3	6
TPRK5T 8 - 8	708	333	375	175	142	25.7	6
TPRK5T 10-10	825	387	438	219	173	41.1	6
TPRK5T 12-12	879	441	438	219	173	41.8	6
TPRK5T 14-14	933	495	438	219	173	44.5	6
TPRK5T 16-16	987	549	438	219	173	45.2	6
TPRK5T 18-18	1119	603	516	268	201	45.9	-
TPRK5T 19-19	1146	630	516	268	201	73.8	-
TPRK5T 20-20	1173	657	516	268	201	74.2	-
TPRK5T 22-22	1227	711	516	268	201	74.9	-
TPRK5T 24-24	1281	765	516	268	201	80.6	-

Performance curve, 50Hz

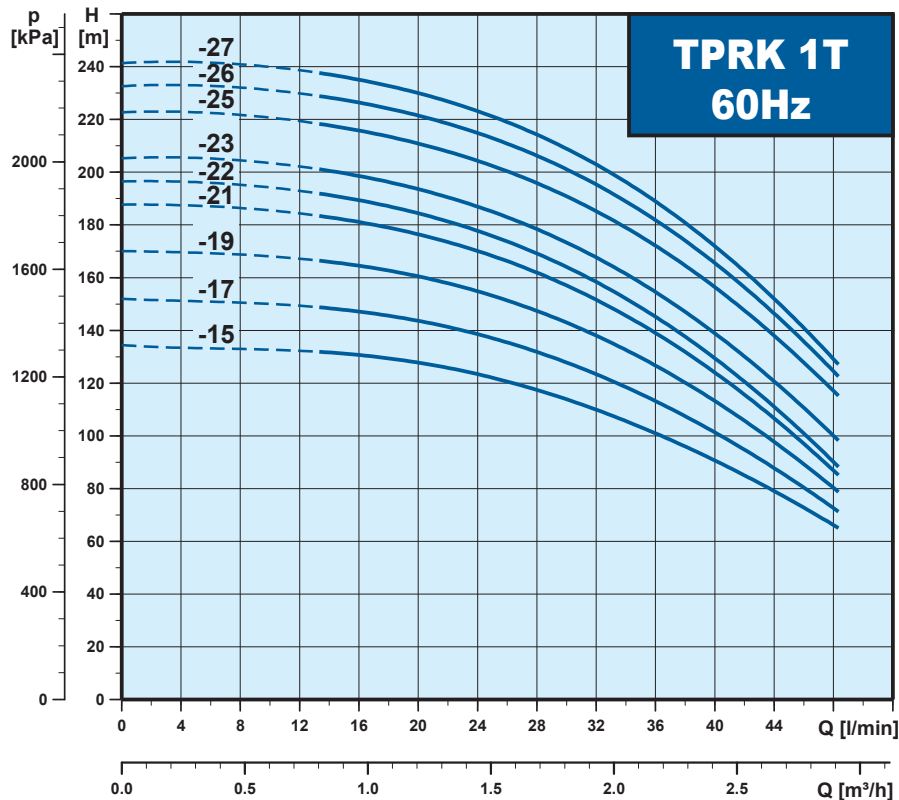


Electrical data, 50Hz

Model	PH (Ø)	Power (kW)	Volts (V)	Ampere (A)
TPRK1T 25-25	3	1.5	198-242 / 342-418	6.2-5.1 / 3.6-2.9
TPRK1T 26-26	3	1.5	198-242 / 342-418	6.2-5.1 / 3.6-2.9
TPRK1T 27-27	3	1.5	198-242 / 342-418	6.2-5.1 / 3.6-2.9
TPRK1T 30-30	3	1.5	198-242 / 342-418	6.2-5.1 / 3.6-2.9
TPRK1T 33-33	3	2.2	198-242 / 342-418	8.9-7.3 / 5.1-4.2
TPRK1T 36-36	3	2.2	198-242 / 342-418	8.9-7.3 / 5.1-4.2

TPRK 1T

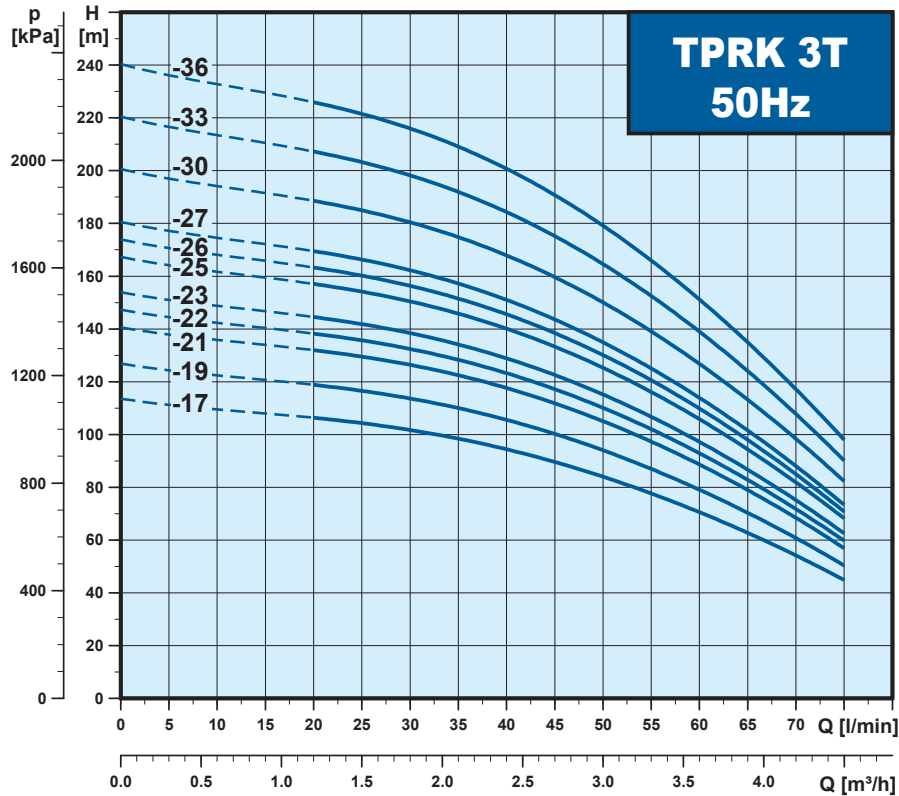
Performance curve, 60Hz



Electrical data, 60Hz

Model	PH (Ø)	Power (kW)	Volts (V)	Ampere (A)
TPRK1T 15-15	3	1.5	198-242 / 342-418	6.2-5.1 / 3.6-2.9
TPRK1T 17-17	3	1.5	198-242 / 342-418	6.2-5.1 / 3.6-2.9
TPRK1T 19-19	3	2.2	198-242 / 342-418	8.9-7.3 / 5.1-4.2
TPRK1T 21-21	3	2.2	198-242 / 342-418	8.9-7.3 / 5.1-4.2
TPRK1T 22-22	3	2.2	198-242 / 342-418	8.9-7.3 / 5.1-4.2
TPRK1T 23-23	3	2.2	198-242 / 342-418	8.9-7.3 / 5.1-4.2
TPRK1T 25-25	3	2.2	198-242 / 342-418	8.9-7.3 / 5.1-4.2
TPRK1T 26-26	3	3	198-242 / 342-418	11.4-9.3 / 6.6-5.4
TPRK1T 27-27	3	3	198-242 / 342-418	11.4-9.3 / 6.6-5.4

Performance curve, 50Hz

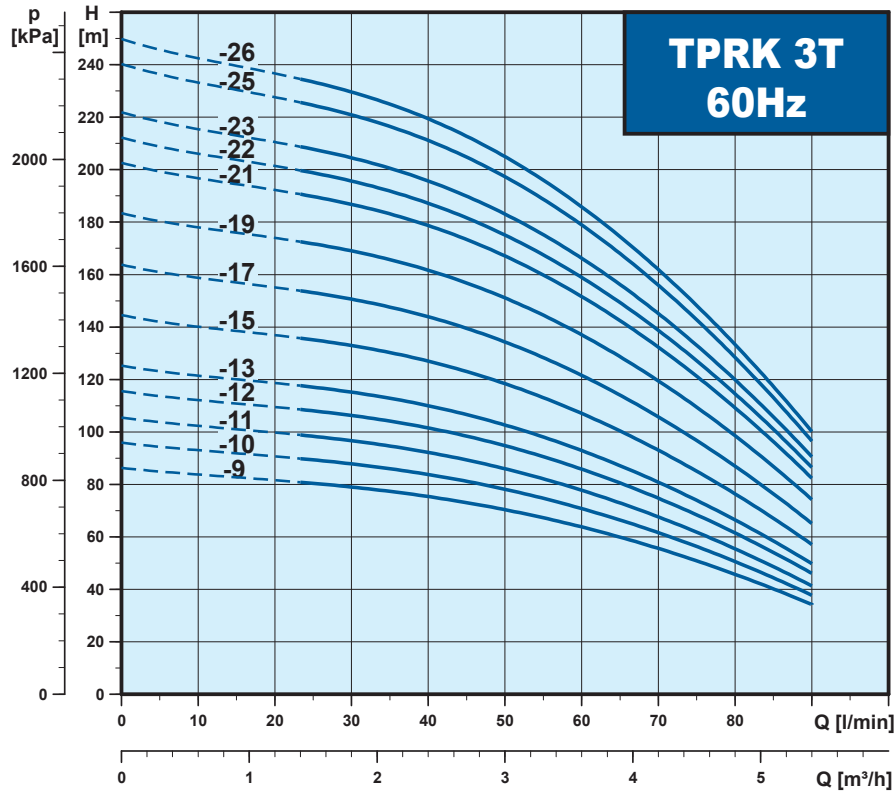


Electrical data, 50Hz

Model	PH (Ø)	Power (kW)	Volts (V)	Ampere (A)
TPRK3T 17-17	3	1.5	198-242 / 342-418	6.2-5.1 / 3.6-2.9
TPRK3T 19-19	3	1.5	198-242 / 342-418	6.2-5.1 / 3.6-2.9
TPRK3T 21-21	3	2.2	198-242 / 342-418	8.9-7.3 / 5.1-4.2
TPRK3T 22-22	3	2.2	198-242 / 342-418	8.9-7.3 / 5.1-4.2
TPRK3T 23-23	3	2.2	198-242 / 342-418	8.9-7.3 / 5.1-4.2
TPRK3T 25-25	3	2.2	198-242 / 342-418	8.9-7.3 / 5.1-4.2
TPRK3T 26-26	3	2.2	198-242 / 342-418	8.9-7.3 / 5.1-4.2
TPRK3T 27-27	3	2.2	198-242 / 342-418	8.9-7.3 / 5.1-4.2
TPRK3T 30-30	3	3	198-242 / 342-418	11.4-9.3 / 6.6-5.4
TPRK3T 33-33	3	3	198-242 / 342-418	11.4-9.3 / 6.6-5.4
TPRK3T 36-36	3	3	198-242 / 342-418	11.4-9.3 / 6.6-5.4

TPRK 3T

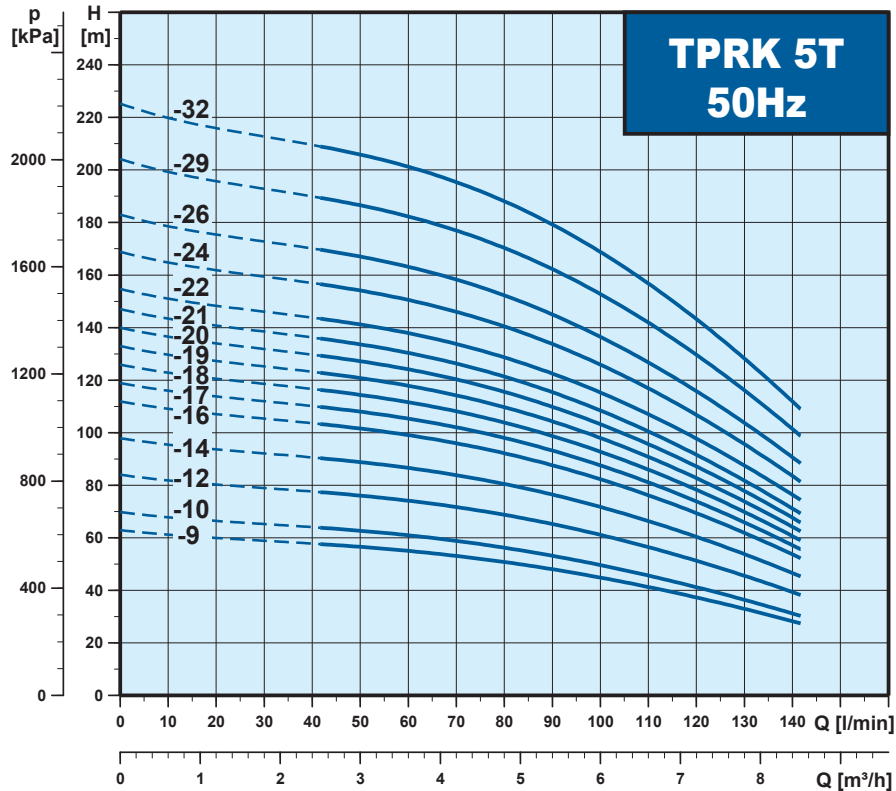
Performance curve, 60Hz



Electrical data, 60Hz

Model	PH (Ø)	Power (kW)	Volts (V)	Ampere (A)
TPRK3T 9 - 9	3	1.5	198-242 / 342-418	6.2-5.1 / 3.6-2.9
TPRK3T 10-10	3	1.5	198-242 / 342-418	6.2-5.1 / 3.6-2.9
TPRK3T 11-11	3	1.5	198-242 / 342-418	6.2-5.1 / 3.6-2.9
TPRK3T 12-12	3	2.2	198-242 / 342-418	8.9-7.3 / 5.1-4.2
TPRK3T 13-13	3	2.2	198-242 / 342-418	8.9-7.3 / 5.1-4.2
TPRK3T 15-15	3	2.2	198-242 / 342-418	8.9-7.3 / 5.1-4.2
TPRK3T 17-17	3	2.2	198-242 / 342-418	8.9-7.3 / 5.1-4.2
TPRK3T 19-19	3	3	198-242 / 342-418	11.4-9.3 / 6.6-5.4
TPRK3T 21-21	3	3	198-242 / 342-418	11.4-9.3 / 6.6-5.4
TPRK3T 22-22	3	3	198-242 / 342-418	11.4-9.3 / 6.6-5.4
TPRK3T 23-23	3	3	198-242 / 342-418	11.4-9.3 / 6.6-5.4
TPRK3T 25-25	3	4	198-242 / 342-418	16.6-13.6 / 9.6-7.9
TPRK3T 26-26	3	4	198-242 / 342-418	16.6-13.6 / 9.6-7.9

Performance curve, 50Hz

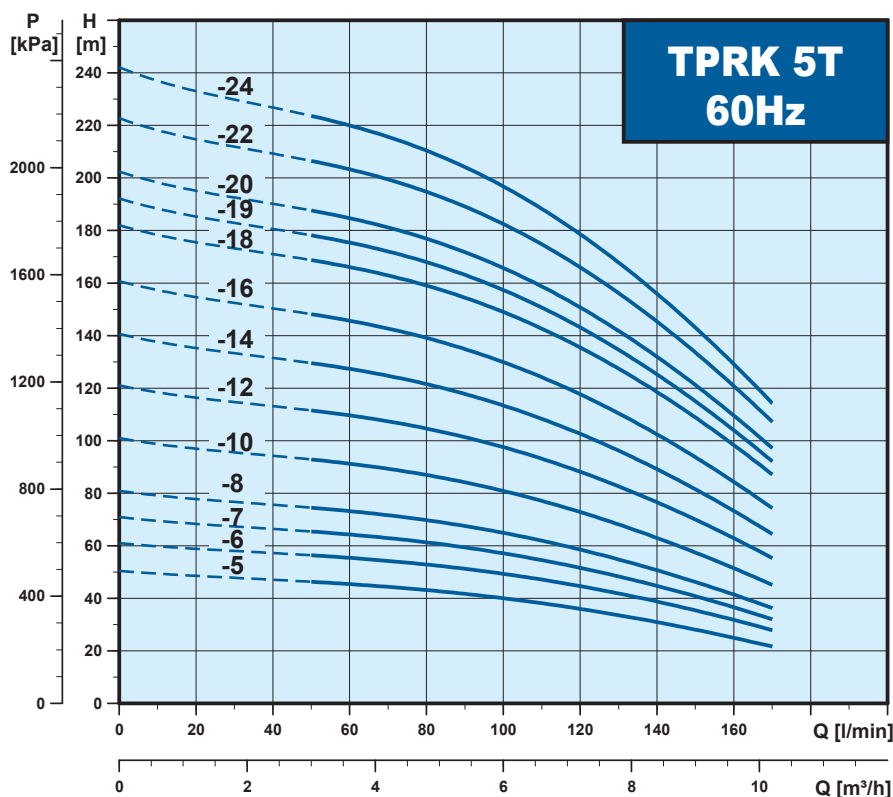


Electrical data, 50Hz

Model	PH (Ø)	Power (kW)	Volts (V)	Ampere (A)
TPRK5T 9 - 9	3	1.5	198-242 / 342-418	6.2-5.1 / 3.6-2.9
TPRK5T 10-10	3	1.5	198-242 / 342-418	6.2-5.1 / 3.6-2.9
TPRK5T 12-12	3	2.2	198-242 / 342-418	8.9-7.3 / 5.1-4.2
TPRK5T 14-14	3	2.2	198-242 / 342-418	8.9-7.3 / 5.1-4.2
TPRK5T 16-16	3	2.2	198-242 / 342-418	8.9-7.3 / 5.1-4.2
TPRK5T 17-17	3	3	198-242 / 342-418	11.4-9.3 / 6.6-5.4
TPRK5T 18-18	3	3	198-242 / 342-418	11.4-9.3 / 6.6-5.4
TPRK5T 19-19	3	3	198-242 / 342-418	11.4-9.3 / 6.6-5.4
TPRK5T 20-20	3	3	198-242 / 342-418	11.4-9.3 / 6.6-5.4
TPRK5T 21-21	3	3	198-242 / 342-418	11.4-9.3 / 6.6-5.4
TPRK5T 22-22	3	4	198-242 / 342-418	16.6-13.6 / 9.6-7.9
TPRK5T 24-24	3	4	198-242 / 342-418	16.6-13.6 / 9.6-7.9
TPRK5T 26-26	3	4	198-242 / 342-418	16.6-13.6 / 9.6-7.9
TPRK5T 29-29	3	4	198-242 / 342-418	16.6-13.6 / 9.6-7.9
TPRK5T 32-32	3	5.5	198-242 / 342-418	21-17.3 / 12.2-10

TPRK 5T

Performance curve, 60Hz



Electrical data, 60Hz

Model	PH (Ø)	Power (kW)	Volts (V)	Ampere (A)
TPRK5T 5 - 5	3	1.5	198-242 / 342-418	6.2-5.1 / 3.6-2.9
TPRK5T 6 - 6	3	2.2	198-242 / 342-418	8.9-7.3 / 5.1-4.2
TPRK5T 7 - 7	3	2.2	198-242 / 342-418	8.9-7.3 / 5.1-4.2
TPRK5T 8 - 8	3	2.2	198-242 / 342-418	8.9-7.3 / 5.1-4.2
TPRK5T 10-10	3	3	198-242 / 342-418	11.4-9.3 / 6.6-5.4
TPRK5T 12-12	3	3	198-242 / 342-418	11.4-9.3 / 6.6-5.4
TPRK5T 14-14	3	4	198-242 / 342-418	16.6-13.6 / 9.6-7.9
TPRK5T 16-16	3	4	198-242 / 342-418	16.6-13.6 / 9.6-7.9
TPRK5T 18-18	3	5.5	198-242 / 342-418	21-17.3 / 12.2-10
TPRK5T 19-19	3	5.5	198-242 / 342-418	21-17.3 / 12.2-10
TPRK5T 20-20	3	5.5	198-242 / 342-418	21-17.3 / 12.2-10
TPRK5T 22-22	3	5.5	198-242 / 342-418	21-17.3 / 12.2-10
TPRK5T 24-24	3	7.5	198-242 / 342-418	28-23 / 16-13



Memo



WALRUS

WALRUS PUMP CO., LTD.

Head office: No.83-14, Dapiantou, Sanzhi Dist,
New Taipei City 252, Taiwan

Tel : (+886) 2 2636-1123~7

Fax : (+886) 2 8635-2660

Email: walrus.sales@walrus.com.tw

Web: walruspump.com



All specifications are subject to change without notice. TPRK-EW003-202004